

Review

Umbilical cord revisited: from Wharton's jelly myofibroblasts to mesenchymal stem cells

Simona Corrao^{1,2*}, Giampiero La Rocca^{1,2*}, Melania Lo Iacono^{1,2},
Tiziana Corsello^{1,2}, Felicia Farina¹ and Rita Anzalone¹

¹Human Anatomy Section, Department of Experimental Biomedicine and Clinical Neurosciences, University of Palermo, Palermo, Italy and ²Euro-Mediterranean Institute of Science and Technology (IEMEST), Palermo, Italy

*Equal contributors

Summary. The umbilical cord (UC) is an essential part of the placenta, contributing to foetal development by ensuring the blood flow between mother and foetus. The UC is formed within the first weeks of gestation by the enclosure of the vessels (one vein and two arteries) into a bulk of mucous connective tissue, named Wharton's jelly (WJ) and lined by the umbilical epithelium. Since their first identification, cells populating WJ were described as unusual fibroblasts (or myofibroblasts). Recent literature data further highlighted the functional interconnection between UC and the resident cells. The UC represents a reservoir of progenitor populations which are collectively grouped into MSCs (mesenchymal stem cells). Such cells have been sourced from each component of the cord, namely the sub-amnion layer, the WJ, the perivascular region, and the vessels. These cells mainly show adherence to the phenotype of adult MSCs (as bone marrow-derived ones) and can differentiate towards mature cell types belonging to all the three germ layers. In addition, cells from human UC are derived from an immunoprivileged organ, namely the placenta: in fact, its development and function depend on the elusion of the maternal immune response towards the semi-allogeneic embryo. This is reflected in the expression of immunomodulatory molecules by UC-derived MSCs. The present paper describes UC structural features and the cell types which can be derived, with a focus on their phenotype and the

novel results which boosted the use of UC-derived cells for regenerative medicine applications.

Key words: Umbilical cord, Wharton's jelly, Mesenchymal stem cells, Extracellular matrix, Immunomodulatory markers, Stromal myofibroblasts

Umbilical cord: development and morpho-functional features

The umbilical cord (UC) is an extraembryonic formation that originates at day 13 of embryonic development (Karahuseyinoglu et al., 2007 and refs therein) and that connects foetus and mother during pregnancy through the placenta. The UC is formed essentially by the closing in of the somatic stalk. The lateral tissue plates arise as a proliferation of the embryonic connective tissue between the ectoderm of the amnion and its mesothelial or endothelial lining. They connect the allantoic stalk to the septum transversum and represent the formation of the UC. By a proliferation of the mesoderm the tissue plates continue to grow in length and thickness. In the stages immediately succeeding the formation of the UC, there is an absolute and relative increase in the cranio-caudal length of its embryonic attachment. The obliteration of the umbilical cord coelom is determined by a proliferation of the fibrous tissue which forms a ring at the embryonic attachment of the cord. Some faults of the junctional mesoderm are responsible for congenital herniation which may result from incorrect development of the cord (Wyburn, 1939). After birth, closure of the UC is an important and yet poorly understood process

Offprint requests to: Dr. Giampiero La Rocca, Sezione di Anatomia Umana, Dipartimento di Biomedicina Sperimentale e Neuroscienze Cliniche, Università degli Studi di Palermo, Via del Vespro 129, 90127 Palermo, Italy. e-mail: giampylr@hotmail.com; giampiero.larocca@unipa.it

that safeguards against blood loss of the newborn. In this process, oxygen tension has been suggested to be one of the initiators of the umbilical closure through artery contraction, even if vasoconstrictor molecules, such as 5-hydroxytryptamine (serotonin) and thromboxan A₂, are the main players of the postpartum UC closure (Quan et al., 2003).

A study on the length of human UC showed that for normal UC at term, there is a wide range of physiological lengths, comprised between 61 and 129 cm. There is little relationship between UC length and parameters such as foetal or placenta weight (Malpas, 1964). The number of twists of the UC are not clearly related to the length, suggesting that the helical structure of the cord is established at a very early stage of the foetus development and that the cord gains in length not by an increase of the number of twists but by a progressive increase in pitch of the primary helix (Malpas and Symonds, 1966); the absence of direct concordance in monozygotic twins suggests a possible control by both genetic and environmental factors (Chaurasia and Agarwal, 1979). The direction of the helixes is dependent on spiral direction of the two arteries around one vein; about 81% of the cords present an anti-clockwise spiral, 10% a clockwise spiral, and 9% show a changed direction of the spiral one or more times (Malcom and Pound, 1971). UCs with a single artery, uncoiled cords and short umbilical cords have been described in cases with chromosomal defects and other genetic syndromes (Ghezzi et al., 2002 and refs therein). Other morphological alterations of UC structure and composition have been found at delivery in a variety of pathologic conditions, such as hypertensive disorders, gestational diabetes, foetal distress and growth restriction (Ghezzi et al., 2002 and refs therein; Tantbirojn et al., 2009), differences in blood flow (Skulstad et al., 2006) and congenital intestinal atresia (Ichinose et al., 2010). The water content, especially in the stroma, seems related to the occurrence of pathological conditions: the presence of oedema can be a warning signal of pending respiratory distress or transient respiratory distress (Scott and Wilkinson, 1978 and refs therein). Moreover, a relationship has been described between foetus growth retardation and the fatty acid content of both umbilical artery and vein, depending on enzymatic placental activity and the blood flowing through vessels (Felton et al., 1994). In addition, pre-eclampsia also affects the structural features of the umbilical cord, with variations in diameter and wall thickness. Kim et al recently demonstrated that pre-eclamptic cords featured reduced amounts of Wharton's jelly, which was also holed in the boundaries (Kim et al., 2012). Given these premises, prenatal morphometry analyses of UC substructures resulted in fundamental assessment of UC global features and performance (Di Naro et al., 2001).

The major vessels of UC are the only conduction organs in it: the surrounding mesenchyme does not present lower calibre vascular structures or neural

elements (Hoyes, 1969). Endothelial cells from umbilical cord vessels display standard expression of key markers such as CD31 and vWF (von Willebrand Factor) (Anzalone et al, 2009; Eleuteri et al., 2009; La Rocca et al., 2009a). The control of vascular tone is thought to be mediated by humoral and local molecules, such as eicosanoids, endothelins and endothelium-derived relaxing factor, which act on arterial smooth muscle (Myatt, 1992), and by systems that control intracellular chloride accumulation (Davis et al., 2000). Biomolecular analyses showed the presence of vasoactive peptides in the stromal compartment of full-term UC, as demonstrated for orphanin, oxytocin, atrial natriuretic peptide (ANP), endothelial nitric oxide synthase (eNOS). Similar results were also obtained for the epithelial (Oxytocin, ANP, eNOS) and endothelial (iNOS, inducible nitric oxide synthase) compartments (Mauro et al., 2011). Other molecules involved in vasoconstriction, such as EGF (epidermal growth factor), TGF- α (transforming growth factor- α) and their receptors, were observed in different zones of the UC (Rao et al., 1995). The well-developed elastic laminae assist the contraction of walls of the umbilical vessels within 15-60 seconds after birth. This contraction is characterized by a change in vessel wall thickening, and an internal elastic lamina with fibres arranged in a roughly circular direction (Martin and Tudor, 1980 and refs therein). Some authors described the presence of large pore spaces which closely surround the cord vessels, hypothesizing their function as a compensatory extra-vascular space which acts facilitating the movement of vessels during pulsatile blood flow (Ferguson and Dodson, 2009).

Microscopic anatomy of human umbilical cord

The umbilical cord is layered by cubic epithelial cells forming the umbilical epithelium (Fig. 1A), an ectoderm-derived structure that continues with amniotic epithelial cells and the tegumentary epithelium of the fetus (Copland et al., 2002; Mizoguchi, 2004). As well described by Hoyes (1969), in human umbilical cord (HUC) the epithelium develops into a structure which resembles the early fetal epidermis. The morphology of its superficial layer is closely related to that of the periderm, a layer of cells for which ultrastructural investigations have suggested the involvement in the production of various constituents of the amniotic fluid (Hoyes, 1968a). At the first week of gestation, the cells show microvilli and cilia and, between the 8th and 10th week, they constitute the single layer of the cord epithelium. The epithelium becomes bilaminar at the end of the 3rd month (Hoyes, 1969). The functional activity of the periderm declines after the onset of differentiation in the intermediate layers of the epidermis. Following the appearance of keratinization and the formation of the umbilical stratum corneum, the periderm disappears from the surface (Hoyes, 1968b). Between 6th and 7th months the epithelium is composed by three or more cell

Classical and novel features of human Wharton's jelly cells

layers bordered by the condensation of collagen filaments immediately beneath the epithelial basement membrane. UC epithelium keratinization rarely occurs, except in the region close to the foetus. At term, this area is opaque and the remaining part consists of a simple squamous epithelium, until the sudden transition to the cubical amniotic epithelium at the junction of the cord with the placenta (Hoyes, 1969).

HUC epithelium covers the sub-amnion and a special embryonic connective tissue, the so-called Wharton's jelly (WJ) which surrounds the adventitia and media of the fetal vessels and is thought to prevent their compression, torsion and bending (Fig. 1B,C) (Ghosh et al., 1984). It is composed of cells which are dispersed in an amorphous ground substance composed of water (about 90%), sulphated glycosaminoglycans (GAGs), such as hyaluronic acid, and proteoglycans, such as decorin and biglycan (Yamada et al., 1983; Gogiel et al., 2003). The extracellular matrix of the three zones of the stroma (the subamniotic stroma, the Wharton's jelly, and the vessels' adventitia) showed immunoreactivity for collagen types I, III and VI and for basement membrane molecules such as collagen type IV, laminin and heparan sulphate proteoglycan (Nanaev et al., 1997; Can and Karahuseyinoglu, 2007). Hyaluronic acid represents the most abundant (almost 70%) of total GAGs, whereas little amounts of other sulphated GAGs, such as keratan sulphate, heparan sulphate, chondroitin-4-sulphate, chondroitin-6-sulphate and dermatan sulphate, were observed (Bańkowski et al., 1996). Collagen filaments have a wide distribution, with various directions in the mesenchyme and an increased amount beneath the epithelium and in the deeper part of the cord, especially near the large umbilical vessels, where they are oriented circularly to the vessels (Hoyes, 1969; Bankowski et al., 1996). In WJ, collagen fibrils create a three-dimensional network that runs from the amniotic membrane to the umbilical vessels: the fibril network is softer in the inner part, characterized by canalicular structures, while it has a dense, sponge-like structure in the outer part (Vizza et

al., 1995, 1996). Collagen fibrils in the ECM form striated small diameter structures, ranging between 30 and 60 nm and organized in spiral bundles (Franc et al., 1998). Type I and type III collagens were found to be the most abundant with an unexpected resistance to solubilization (Bańkowski et al., 1996; Sobolewski et al., 1997). Type VII collagen is expressed in the epithelium and in the endothelial cells, but it was found as predominately expressed by fibroblast-like WJ cells (Ryynänen et al., 1993). The fibrillar network system seems to be maintained by coupling with glycoprotein microfibrils (Meyer et al. 1983; Franc et al., 1998). Special distribution of the various collagen types has been suggested to be responsible for the mechanical properties of the UC (Takechi et al., 1993). Extracellular matrix (ECM) components can act as a storage of growth factors that sustain stromal cells (Sobolewski et al., 2005): an increasing number of growth factors such as IGFs (insulin-like growth factors), FGFs (fibroblast growth factors) and TGF- β (transforming growth factor-beta), have been found to be associated with ECM proteins or with heparan sulphate. These growth factors, in turn, control cell proliferation, differentiation, synthesis and remodelling of the ECM. IGF-1 is known as a stimulator for the biosynthesis of the main components of ECM, such as collagen and sulphated glycosaminoglycans (Palka et al., 2000; Bańkowski et al., 2000). IGF-1 also has a role in cartilage biosynthesis and repair in animal models (Martin et al., 1997; Loeser et al., 2000; Messai et al., 2000). Early reports on microscopic features of ECM revealed presence of elastic fibres. As reported by Parry (1970), full-term HUC showed the staining properties of mature elastic fibres. The WJ showed very fine and scanty fibres, while they were abundant in vessels walls. At the fine structure, the fibres were composed entirely of tubular 10-nm diameter filaments (Parry, 1970). ECM homeostasis is regulated by balanced secretion and degradation of collagens, proteoglycans, elastin and structural glycoproteins, suggesting that any imbalance

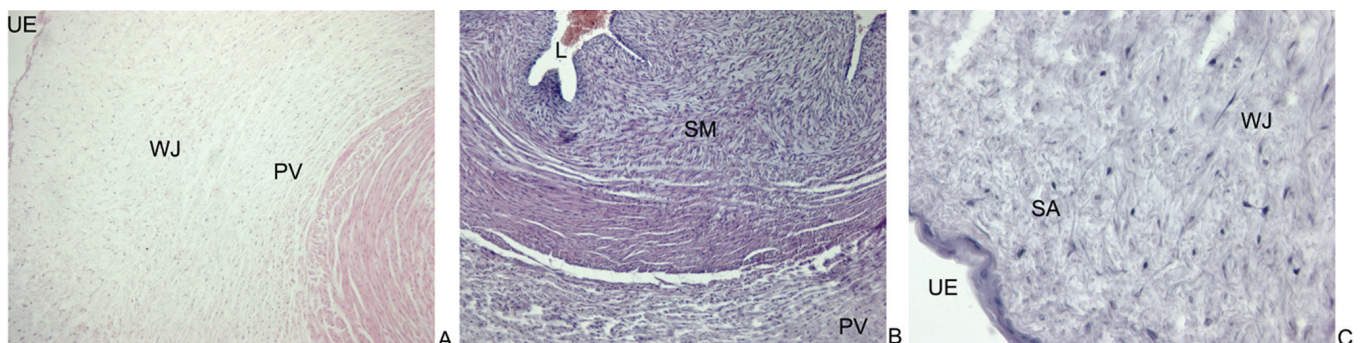


Fig. 1. Micrographs depicting umbilical cord tissue and zones. **A.** Wharton's jelly (WJ) represents the main bulk of tissue between the umbilical epithelium (UE) and the perivascular zone (PV). **B.** Higher magnification panel depicting part of a transverse section of umbilical vein enclosing its lumen (L), and with the smooth muscle layers of tunica media (SM). **C.** Higher magnification panel depicting the umbilical epithelium with the sub-amnion (SA) which is continuous with Wharton's jelly. A, x 10; B, x 20; C, x 40

of these molecules can affect the normal function of the tissue. ECM remodelling is thus a crucial point in the onset of diseases, where the proteolytic activities of enzymes, such as matrix metalloproteinases (MMPs), play a pivotal role (La Rocca et al., 2004, 2007; Galewska et al., 2008; Mauro et al., 2010; Romanowicz and Galewska, 2011).

Umbilical cord stromal stem cells: from myofibroblast to mesenchymal stem cells

The abundant ECM of umbilical cord stroma contain dispersed stromal cells, now referred to as mesenchymal stem cells (MSC). Studies by Takechi and colleagues suggested that the majority of stromal cells were myofibroblasts (Takechi et al., 1993). The term 'myofibroblast' was first described by Majno and colleagues (1971), since fibroblasts from different tissues presented features typical of smooth muscle cells: they showed contractile systems, as well as bundles of fibrils, desmosomes, and cell-to-cell and cell-to-stroma attachments (Majno et al., 1971; Gabbiani et al., 1972). These observations confirmed data previously described after electron microscopy studies (Parry, 1970). Even if the stroma can be divided into three different zones (sub-amnion, Wharton's jelly, and perivascular zone) and there are some differences between cells dispersed in these zones (as discussed below), the term 'Wharton's jelly cells' (WJCs) is often extended to all umbilical stromal cells. Immunogold techniques showed that stromal WJCs are characterized by cytoplasmic α -smooth muscle actin microfilaments after second trimester, suggesting a maturation of these cells towards myofibroblasts (Kobayashi et al., 1998). WJCs are positive to vimentin, desmin and α -smooth muscle actin, therefore showing similarity to smooth muscle cells of umbilical vessels. Only the stromal cells were positive for prolyl 4-hydroxylase, and electron microscopy revealed the presence of rough endoplasmic reticulum, bundles of smooth-muscle type filaments with focal densities, a large Golgi apparatus and granules containing collagen, lipids and glycogen (Eyden et al., 1994). The presence of a wide rough endoplasmic reticulum and of a well-developed Golgi apparatus in most of the cells indicates a capacity for protein synthesis and secretion. Thus, they may be thought as the source of the cord collagen (as also suggested by prolyl-4-hydroxylase positivity) and, although showing some superficial resemblance to smooth muscle cells, WJCs were described as a population of unusual fibroblasts (Parry, 1970).

As well summarized and analyzed by different groups, MSCs derived from HUC and other foetal/neonatal tissues share common features with MSCs derived from adult tissues (bone marrow, adipose tissue, peripheral blood) as well as self-renewal capability and differentiative potential towards different types of tissue cells, such as adipocytes (Fig. 2), osteoblasts and chondroblasts (Huang et al., 2012). The

main differences from BM-MSCs reside in the number of cells obtainable from tissue, the feature of properties of true stem cells (which WJCs retain even after extended *in vitro* culture passages), and the surface markers involved in immune tolerance (Troyer and Weiss, 2008; La Rocca et al., 2009b; Anzalone et al., 2010, 2011a; Nekanti et al., 2010; Hass et al., 2011; Jeschke et al., 2011; Lo Iacono et al., 2011a; Prasanna and Jahnavi, 2011). Studies carried out by Miki and colleagues demonstrated that amniotic epithelial cells (AECs) from placenta possess a differentiative potential towards mature cell types derived from the three germ layers: endoderm (liver and pancreas), mesoderm (cardiomyocyte), and ectoderm (neural cells) *in vitro*. AECs did not express telomerase, and were non-tumorigenic when transplanted into immunodeficient SCID/beige or Rag2^{-/-} mice (Miki et al., 2005). Similarly, primary cells with an epithelioid morphology, known as cord-lining epithelial cells (CLECs), were derived from cord lining membrane. These cells expressed classical pluripotency markers, as well as Oct-4 and Nanog (Kita et al., 2010) and they showed chromosomal stability after vectors integration, a parameter which may be of importance for their use in clinical applications in gene therapy (Sivalingam et al., 2010).

We and others described in WJCs the presence of markers responsible for the maintenance of an undifferentiated state and self-renewal, such as Nanog and Oct-4, and for the immune tolerance, such as the non-canonical class I MHC HLA-G. These reports suggest that one of the effects of WJCs administration may be the instauration of tolerogenic responses in the host, avoiding transplant rejection (Weiss et al., 2008; La Rocca et al., 2009b). In addition, apart from classical MSCs markers, *in vitro* expanded WJCs do express mesodermal markers such as vimentin and α -smooth muscle actin; endodermal markers as Gata-4, Gata-5, Gata-6, HNF4- α ; and neuro-ectodermal markers as nestin, neuron specific enolase (NSE) and glial fibrillary acid protein (GFAP) (Romanov et al., 2003; La Rocca et al., 2009b). These findings support the hypothesis that these cells can differentiate towards different mature cell types derived from all three germ layers (La Rocca et al., 2009b). WJCs also expressed CD68 at both the protein and RNA level. CD68 is a marker whose expression is not restricted to the macrophage lineage, as suggested by other recent reports (Gottfried et al., 2008; La Rocca et al., 2009c). Further recent reports from us and others allowed to better define the immune properties and immunomodulatory markers expressed by placenta-derived cells. Tee et al recently demonstrated that hepatocyte-differentiated hAECs also maintained the expression of key immunomodulatory molecules (Tee et al., 2013). In another report, also WJ-MSCs, subjected to the standard three-lineage differentiation experiments, have been demonstrated to maintain the expression of immunomodulatory molecules such as HLA-E and B7-H3 (CD276) (La Rocca et al., 2013). These molecules

Classical and novel features of human Wharton's jelly cells

have also been reported to be expressed in other adult MSCs populations (Anzalone et al., 2013). Recently, CD 271, an immunomodulatory molecule originally described in BM-MSCs, has also been shown to be expressed in fresh umbilical cord specimens (Margossian et al., 2012).

UC-MSCs are also thought to be a promising tool in cancer therapy, because of their preferential homing to the site of the tumor. This feature may be due to the cellular response induced by release of chemotactic factors from the primary lesion site. In fact, *in vivo* and *in vitro* studies supported this hypothesis, demonstrating that WJCs administration may result in reduced tumor growth (Ayuzawa et al., 2009; Tamura et al., 2011).

Recent data from our group also suggested the expression of heat shock protein 10 (Hsp10) in WJ-MSCs (Lo Iacono et al., 2011b). As described before by us and others, Hsp10 (known also as EPF, early pregnancy factor) is centrally involved in the modulation of the immune response during pregnancy, apart from its roles in tumour immunology and developmental processes (Cappello et al., 2006, 2007; Corrao et al., 2010). Immunohistochemical (Takechi et al., 1993; Nanaev et al., 1997) and *in vitro* (Karahuseyinoglu et al., 2007; Sarugaser et al., 2005) studies have suggested differences in the number and features of UC-MSCs. In fact, as well described in the literature, different types of stromal cells are dispersed in different zones of the

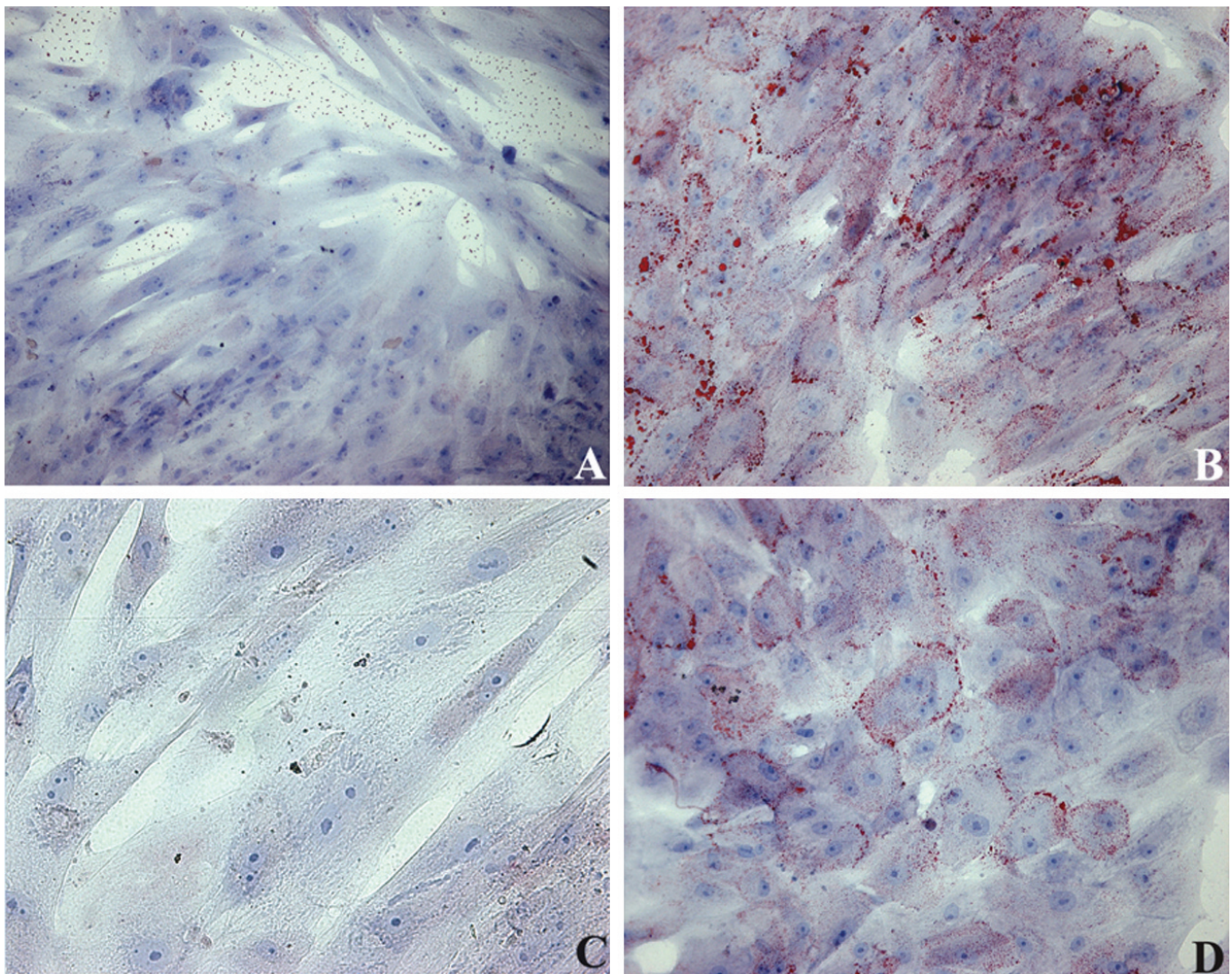


Fig. 2. Light microscopic demonstration of adipocyte differentiation of WJ-MSC with Oil Red O staining. WJ-MSC cultured for 3 weeks in adipogenic medium, showed variations in cellular morphology (**B, D**) and accumulation of neutral lipid vacuoles (demonstrated by Oil Red O staining) with respect to control cells. The latter (**A, C**) were cultured for the same time in standard culture medium, and retained the normal fibroblast-like morphology, without any positivity for the lipid-specific staining procedure. A, B, x 20; C, D, x 40

umbilical matrix (the sub-amnion, Wharton's jelly and the perivascular stroma), sharing common features in terms of marker molecules (generally expressed by MSCs from other tissues), such as CD73, CD105, CD90, and CD44, α -smooth muscle actin, and vimentin (Conconi et al., 2011; Jeschke et al., 2011; De Kock et al., 2012), while desmin was not expressed in sub-amniotic cells (Jeschke et al., 2011). On the other hand, sub-amniotic cells did express CD14 (which has not yet been detected in other UC-MSCs) and STRO-1 molecules; CD133 and CD235a molecules are expressed in the whole UC, but not in cells derived from the different zones (Conconi et al., 2011 and refs therein). As demonstrated for WJCs, sub-amniotic MSCs also showed the expression of Oct-4 and Nanog (Kita et al., 2010). Cells obtained from perivascular stroma feature a non-hematopoietic myofibroblastic mesenchymal phenotype (CD45⁻, CD34⁻, CD105⁺, CD73⁺, CD90⁺, CD44⁺, CD106⁺, 3G5⁺, CD146⁺), they are non-alloreactive, possess immunosuppressive activity, and significantly reduce lymphocyte activation *in vitro* (Sarugaser et al., 2009). They lack expression of Oct-4 marker and in prolonged *in vitro* culture (after the first five passages), these cells have been demonstrated to lose expression of both type I and II MHC molecules (Sarugaser et al., 2005). Perivascular cells have also been shown to contribute to both musculo-skeletal and dermal wound healing *in vivo* (Sarugaser et al., 2009). In literature, the features of MSCs from the sub-endothelial layer (vessel wall) were also described: they expressed molecules such as CD29 (integrin β -1), CD44 (H-CAM), CD49e (integrin α 5), CD13, while being negative for classical endothelial markers, such as vWF and CD31 (Romanov et al., 2003; Conconi et al., 2011 and refs therein). During the first passages of *in vitro* culture, these cells resulted positive for α -smooth muscle actin, fibronectin, type I collagen, and VCAM, showing also a differentiation potential towards adipocytes and osteoblasts (Romanov et al., 2003).

The range of potential clinical indications for UC-derived MSCs in cellular therapy is constantly growing. On one hand, these cells are able to differentiate towards a number of mature cell types belonging to the three germ layers, as demonstrated for neural cells (Mitchell et al., 2003), cardiomyocytes (Hollweck et al., 2011; Corrao et al., 2013), endothelial cells (Alaminos et al., 2010) and hepatocytes (Campard et al., 2008; Anzalone et al., 2010). Recent data indicated WJCs as potential candidates for musculoskeletal tissue engineering (reviewed in Wang et al., 2011). HUC-MSCs differentiated towards muscle tissue as described by Kocaefe and colleagues. In their experiments, WJCs were used in gene transfection and/or co-culture with muscle cell lines: when genetically reprogrammed, these cells exhibited many cellular signs of myogenic conversion and became capable of forming multinucleated myofibers. Differentiated WJCs featured the expression of functional markers (β -catenin, neural cell adhesion molecule and M-cadherin), as well as

muscle cell-specific structural proteins (desmin, α -actinin, dystrophin, myosin heavy chain, and myoglobin) and muscle-specific enzymes (such as creatinine phosphokinase) (Kocaefe et al., 2010). Cartilage tissue engineering is another therapeutic option which is being actively explored for WJCs (Wang et al., 2009; Lo Iacono et al., 2011a). The possibility to apply WJCs to type I diabetes treatment has recently emerged. These cells may play a role either by direct differentiation towards β cells, or by favouring organ repair processes, due to their anti-inflammatory and immunomodulatory roles (Anzalone et al., 2011b). The proposed ability of UC-derived MSCs, and in particular WJ-MSCs, as immune modulators attracted great interest for their application in a number of diseases, apart from their differentiative capacity (La Rocca, 2011; La Rocca et al., 2012). As a further example, recent data indicated that WJ-MSCs may be effectively used in the management of GVHD (graft versus host disease) (McGuirk and Weiss, 2011).

Conclusions and future perspectives

More than 40 years of research on umbilical cord and its resident cells have provided a great amount of information on the biological features of these extra-embryonic populations. UC matrix and cell types cooperate to maintain structure and functional performance of the organ throughout pregnancy. *In situ* and *in vitro* analyses demonstrated that cells from WJ and the other zones of UC do express stem cells markers, together with markers of mature cell types derived from all of the three germ layers. *In vitro* experiments, also confirmed by *in vivo* readouts in animal models, clearly highlighted the ability of UC-derived stem cells to differentiate towards several cell types, acquiring their marker expression and functional activities. This attracted great interest in the use of these cells in cellular therapy of various human diseases, and also for their peculiar ease of sourcing, the high cell numbers obtainable, and the lack of any ethical concerns.

In addition, in parallel to the classic repopulation-type approach of regenerative medicine, recent data indicated that UC-MSCs administration may favour organ repair independently from their differentiative capacity, e.g. by re-activating proliferative and differentiative mechanisms of local precursors (La Rocca and Anzalone, 2013). This may be achieved thanks to the expression of a number of immunomodulatory molecules in UC-MSCs, which derive from an organ which is clearly immunoprivileged during pregnancy, and may therefore keep this "positional memory" also when cultured *in vitro* and when administered *in vivo*.

Due to the great interest and hopes for the use of these cell types, in our opinion more research is needed, in that universally accepted isolation procedures, subculture and cryopreservation are still far from being

Classical and novel features of human Wharton's jelly cells

established. In addition, basic research aimed to the discovery of new markers expressed by these cells must be encouraged to clearly define their phenotype and potentials and increase safety in patients receiving these cells.

Acknowledgements. Authors' results referred to in this paper were in part supported by University of Palermo grants (ex 60% 2007) to RA, FF, GLR and Istituto Euro-Mediterraneo di Scienza e Tecnologia (IEMEST) to GLR.

Conflict of Interest. Dr. La Rocca is a member of the Scientific Board of Auxocell Laboratories, Inc. The funders had no role in article design, data collection, decision to publish, or preparation of the manuscript.

References

- Alaminos M., Pérez-Köhler B., Garzón I., García-Honduvilla N., Romero B., Campos A. and Buján J. (2010). Transdifferentiation potentiality of human Wharton's jelly stem cells towards vascular endothelial cells. *J. Cell. Physiol.* 223, 640-647.
- Anzalone R., La Rocca G., Di Stefano A., Magno F., Corrao S., Carbone M., Loria T., Lo Iacono M., Eleuteri E., Colombo M., Cappello F., Farina F., Zummo G. and Giannuzzi P. (2009). Role of endothelial cell stress in the pathogenesis of chronic heart failure. *Front. Biosci.* 14, 2238-2247.
- Anzalone R., Lo Iacono M., Corrao S., Magno F., Loria T., Cappello F., Zummo G., Farina F. and La Rocca G. (2010). New emerging potentials for human Wharton's jelly mesenchymal stem cells: immunological features and hepatocyte-like differentiative capacity. *Stem Cell Dev.* 19, 423-438.
- Anzalone R., Farina F., Zummo G. and La Rocca G. (2011a). Recent patents and advances on isolation and cellular therapy applications of mesenchymal stem cells from human umbilical cord Wharton's jelly. *Recent Pat. Regen. Med.* 1, 216-227.
- Anzalone R., Lo Iacono M., Loria T., Di Stefano A., Giannuzzi P., Farina F. and La Rocca G. (2011b). Wharton's jelly mesenchymal stem cells as candidates for beta cells regeneration: extending the differentiative and immunomodulatory benefits of adult mesenchymal stem cells for the treatment of type 1 diabetes. *Stem Cell Rev.* 7, 342-363.
- Anzalone R., Corrao S., Lo Iacono M., Loria T., Corsello T., Cappello F., Di Stefano A., Giannuzzi P., Zummo G., Farina F. and La Rocca G. (2013). Isolation and characterization of CD276+/HLA-E+ human subendocardial mesenchymal stem cells from chronic heart failure patients: analysis of differentiative potential and immunomodulatory markers expression. *Stem Cells Dev.* 22, 1-17.
- Ayuzawa R., Doi C., Rachakatla R.S., Pyle M.M., Maurya D.K., Troyer D. and Tamura M. (2009). Naïve human umbilical cord matrix derived stem cells significantly attenuate growth of human breast cancer cells *in vitro* and *in vivo*. *Cancer Lett.* 280, 31-37.
- Bańkowski E., Sobolewski K., Romanowicz L., Chyczewski L. and Jaworski S. (1996). Collagen and glycosaminoglycans of Wharton's jelly and their alterations in EPH-gestosis. *Eur. J. Obstet. Gynecol.* 66, 109-117.
- Bańkowski E., Pawlicka E. and Jaworski S. (2000). Stimulation of collagen biosynthesis by the umbilical cord serum of newborns delivered by mothers with EPH-gestosis (preeclampsia). *Clin. Chim. Acta.* 302, 23-34.
- Campard D., Lysy P.A., Najimi M. and Sokal E.M. (2008). Native umbilical cord matrix stem cells express hepatic markers and differentiate into hepatocyte-like cells. *Gastroenterology* 134, 833-848.
- Can A. and Karahuseyinoglu S. (2007). Concise review: human umbilical cord stroma with regard to the source of fetus-derived stem cells. *Stem Cells* 25, 2886-2895.
- Cappello F., Di Stefano A., David S., Rappa F., Anzalone R., La Rocca G., D'Anna S.E., Magno F., Donner C.F., Balbi B. and Zummo G. (2006). Hsp60 and Hsp10 down-regulation predicts bronchial epithelial carcinogenesis in smokers with chronic obstructive pulmonary disease. *Cancer* 107, 2417-2424.
- Cappello F., Czarnecka A.M., La Rocca G., Di Stefano A., Zummo G. and Macario A.J. (2007). Hsp60 and Hsp10 as antitumor molecular agents. *Cancer Biol. Ther.* 6, 487-489.
- Charausia B.D. and Agarwal B.M. (1979). Helical structure of the human umbilical cord. *Acta Anat. (Basel).* 103, 226-230.
- Conconi M.T., Di Liddo R., Tommasini M., Calore C. and Parnigotto P.P. (2011). Phenotype and differentiation potential of stromal populations obtained from various zones of human umbilical cord: an overview. *Open Tissue Eng. Regen. Med. J.* 4, 6-20.
- Copland I.B., Adamson S.L., Post M., Lye S.J. and Caniggia I. (2002). TGF-β3 expression during umbilical cord development and its alteration in pre-eclampsia. *Placenta.* 23, 311-321.
- Corrao S., Campanella C., Anzalone R., Farina F., Zummo G., Conway de Macario E., Macario A.J.L., Cappello F. and La Rocca G. (2010). Human Hsp10 and Early Pregnancy Factor (EPF) and their relationship and involvement in cancer and immunity: Current knowledge and perspectives. *Life Sci.* 86, 145-152.
- Corrao S., La Rocca G., Lo Iacono M., Zummo G., Gerbino A., Farina F. and Anzalone R. (2013). New Frontiers in Regenerative Medicine in Cardiology: The Potential of Wharton's Jelly Mesenchymal Stem Cells. *Curr. Stem Cell Res. Ther.* 8, 39-45.
- Davis J.P.L., Chien P.F.-W., Chipperfield A.R., Gordon A. and Harper A.A. (2000). The three mechanisms of intracellular chloride accumulation in vascular smooth muscle of human umbilical and placental arteries. *Pflügers Arch.-Eur. J. Physiol.* 441, 150-154.
- De Kock J., Najjar M., Bolleyn J., Al Battah F., Rodrigues R.M., Buyl K., Raicevic G., Govaere O., Branson S., Meganathan K., Gaspar J.A., Roskams T., Sachinidis A., Lagneaux L., Vanhaecke T. and Rogiers V. (2012). Mesoderm-derived stem cells: the link between the transcriptome and their differentiation potential. *Stem Cells Dev.* 21, 3309-3323.
- Di Naro E., Ghezzi F., Raio L., Franchi M. and D'Addario V. (2001). Umbilical cord morphology and pregnancy outcome. *Eur. J. Obstet. Gynecol. Reprod. Biol.* 96, 150-157.
- Eleuteri E., Di Stefano A., Ricciardolo F.L., Magno F., Gnemmi I., Colombo M., Anzalone R., Cappello F., La Rocca G., Tarro Genta F., Zummo G. and Giannuzzi P. (2009). Increased nitrotyrosine plasma levels in relation to systemic markers of inflammation and myeloperoxidase in chronic heart failure. *Int. J. Cardiol.* 135, 386-390.
- Eyden B.P., Ponting J., Davies H., Bartley C. and Torgersen E. (1994). Defining the myofibroblast: Normal tissues, with special reference to the stromal cells of Wharton's jelly in human umbilical cord. *J. Submicrosc. Cytol. Pathol.* 26, 347-355.
- Felton C.V., Chang T.C., Crook D., Marsh M., Robson S.C. and Spencer J.A.D. (1994). Umbilical vessel wall fatty acids after normal and retarded fetal growth. *Arch. Dis. Child. Fet. Neonatal. Ed.* 70,

Classical and novel features of human Wharton's jelly cells

- F36-F39.
- Ferguson V.L. and Dodson R.B. (2009). Bioengineering aspects of the umbilical cord. *Eur. J. Obstet. Gynecol. Reprod. Biol.* 144 (Suppl 1), S108-S113.
- Franc S., Rousseau J.C., Garrone R., van der Rest M. and Moradi-Améli M. (1998). Microfibrillar composition of umbilical cord matrix: characterization of fibrillin, collagen VI and intact collagen V. *Placenta* 19, 95-104.
- Gabbiani G., Hirschel B.J., Ryan G.B., Statkov P.R. and Majno G. (1972). Granulation tissue as a contractile organ. *J. Exp. Med.* 135, 719-734.
- Galewska Z., Romanowicz L., Jaworski S. and Bańkowski E. (2008). Gelatinase matrix metalloproteinase (MMP)-2 and MMP-9 of the umbilical cord blood in preeclampsia. *Clin. Chem. Lab. Med.* 46, 517-522.
- Ghezzi F., Raio L., Di Naro E., Franchi M., Buttarelli M. and Schneider H. (2002). First-trimester umbilical cord diameter: a novel marker of fetal aneuploidy. *Ultrasound Obstet. Gynecol.* 19, 235-239.
- Ghosh K.G., Ghosh S.N. and Gupta A.B. (1984). Tensile properties of human umbilical cord. *Indian J. Med. Res.* 79, 538-541.
- Gogiel T., Bańkowski E. and Jaworski S. (2003). Proteoglycans in Wharton's jelly. *Int. J. Biochem. Cell Biol.* 35, 1461-1469.
- Gottfried E., Kunz-Schughart L.A., Weber A., Rehli M., Peuker A., Müller A., Kastenberger M., Brockhoff G., Andreesen R. and Kreutz M. (2008). Expression of CD68 in non-myeloid cell types. *Scand. J. Immunol.* 67, 453-463.
- Hass R., Kasper C., Böhm S. and Jacobs R. (2011). Different populations and sources of human mesenchymal stem cells (MSC): a comparison of adult and neonatal tissue-derived MSC. *Cell Commun. Signal.* 14, 9-12.
- Hollweck T., Hartmann I., Eblenkamp M., Wintermantle E., Reichart B., Überfuhr P. and Eissner G. (2011). Cardiac differentiation of human Wharton's jelly stem cells-experimental comparison of protocols. *Open Tissue Eng. Regen. Med. J.* 4, 95-102.
- Hoyes A.D. (1968a). Ultrastructure of the cells of the amniotic fluid. *J. Obstet. Gynaec. Br. Commonw.* 75, 164-171.
- Hoyes A.D. (1968b). Electron microscopy of the surface layer (periderm) of human foetal skin. *J. Anat.* 103, 321-336.
- Hoyes A.D. (1969). Ultrastructure of the epithelium of the human umbilical cord. *J. Anat.* 150, 149-162.
- Huang Y.C., Parolini O., La Rocca G. and Deng L. (2012). Umbilical cord versus bone marrow derived mesenchymal stromal cells. *Stem Cells Dev.* 21, 2900-2903.
- Ichinose M., Takemura T. and Andoh K. and Sugimoto M. (2010). Pathological analysis of umbilical cord ulceration associated with fetal duodenal and jejunal atresia. *Placenta* 31, 1015-1018.
- Jeschke M.G., Gauglitz G.G., Phan T.T., Herndon D.N., and Kita K. (2011). Umbilical cord lining membrane and Wharton's jelly-derived mesenchymal stem cells: the similarities and differences. *Open Tissue Eng. Regen. Med. J.* 4, 21-27.
- Karahuseyinoglu S., Cinar O., Kilic E., Kara F., Akay G.G., Demiralp D.O., Tukun A., Uckan D. and Can A. (2007). Biology of stem cells in human umbilical cord stroma: in situ and *in vitro* surveys. *Stem Cell* 25, 319-331.
- Kim K.S., Kim Y.S., Lim J.I., Jung M.H. and Park H.K. (2012). Nanoscale imaging of morphological changes of umbilical cord in pre-eclampsia. *Microsc. Res. Tech.* 75, 1445-1451.
- Kita K., Gauglitz G.G., Phan T.T., Herndon D.N. and Jeschke M.G. (2010). Isolation and characterization of mesenchymal stem cells from the sub-amniotic human umbilical cord lining membrane. *Stem Cell Dev.* 19, 491-502.
- Kobayashi K., Kubota T. and Aso T. (1998). Study on myofibroblast differentiation in the stromal cells of Wharton's jelly: Expression and localization of alpha-smooth muscle actin. *Early Hum. Dev.* 51, 223-233.
- Kocafee C., Balci D., Hayta B.B. and Can A. (2010). Reprogramming of human umbilical cord stromal mesenchymal stem cells for myogenic differentiation and muscle repair. *Stem Cell Rev.* 6, 512-522.
- La Rocca G. (2011). Connecting the dots: The promises of Wharton's jelly mesenchymal stem cells for tissue repair and regeneration. *Open Tissue Eng. Regen. Med. J.* 4, 3-5.
- La Rocca G. and Anzalone R. (2013). Perinatal stem cells revisited: directions and indications at the crossroads between tissue regeneration and repair. *Curr. Stem Cell Res. Ther.* 8, 2-5.
- La Rocca G., Pucci-Minafra I., Marrazzo A., Taormina P. and Minafra S. (2004). Zymographic detection and clinical correlations of MMP-2 and MMP-9 in breast cancer sera. *Br. J. Cancer* 90, 1414-1421.
- La Rocca G., Anzalone R., Magno F., Farina F., Cappello F. and Zummo G. (2007). Cigarette smoke exposure inhibits extracellular MMP-2 (gelatinase A) activity in human lung fibroblasts. *Resp. Res.* 8, 23.
- La Rocca G., Di Stefano A., Eleuteri E., Anzalone R., Magno F., Corrao S., Loria T., Martorana A., Di Gangi C., Colombo M., Sansone F., Patanè F., Farina F., Rinaldi M., Cappello F., Giannuzzi P. and Zummo G. (2009a). Oxidative stress induces myeloperoxidase expression in endocardial endothelial cells from patients with chronic heart failure. *Basic Res. Card.* 104, 307-320.
- La Rocca G., Anzalone R., Corrao S., Magno F., Loria T., Lo Iacono M., Di Stefano A., Giannuzzi P., Marasà L., Cappello F., Zummo G. and Farina F. (2009b). Isolation and characterization of Oct-4+/HLA-G+ mesenchymal stem cells from human umbilical cord matrix: differentiation potential and detection of new markers. *Histochem. Cell Biol.* 131, 267-282.
- La Rocca G., Anzalone R. and Farina F. (2009c). The expression of CD68 in human umbilical cord mesenchymal stem cells: new evidences of presence in non-myeloid cell types. *Scand. J. Immunol.* 70, 161-162.
- La Rocca G., Corrao S., Lo Iacono M., Corsello T., Farina F. and Anzalone R. (2012). Novel immunomodulatory markers expressed by human WJ-MSC: an updated review in regenerative and reparative medicine. *Open Tissue Eng. Regen. Med. J.* 5, 50-58.
- La Rocca G., Lo Iacono M., Corsello T., Corrao S., Farina F. and Anzalone R. (2013). Human Wharton's jelly mesenchymal stem cells maintain the expression of key immunomodulatory molecules when subjected to osteogenic, adipogenic and chondrogenic differentiation *in vitro*: new perspectives for cellular therapy. *Curr. Stem Cell Res. Ther.* 8, 100-113.
- Lo Iacono M., Anzalone R., Corrao S., Giuffrè M., Di Stefano A., Giannuzzi P., Cappello F., Farina F. and La Rocca G. (2011a). Perinatal and Wharton's jelly-derived mesenchymal stem cells in cartilage regenerative medicine and tissue engineering strategies. *Open Tissue Eng. Regen. Med. J.* 4, 72-81.
- Lo Iacono M., Anzalone R., Corrao S., Zummo G., Farina F. and La Rocca G. (2011b). Non-classical type I HLAs and B7 costimulators revisited: analysis of expression and immunomodulatory role in undifferentiated and differentiated MSC isolated from human umbilical cord Wharton's jelly. *Histol. Histopathol.* 26 (Supplement 1), 313.

Classical and novel features of human Wharton's jelly cells

- Loeser R.F., Shanker G., Carlson C.S., Gardin J.F., Shelton B.J. and Sonntag W.E. (2000). Reduction in the chondrocyte response to insulinlike growth factor 1 in aging and osteoarthritis: studies in a non-human primate model of naturally occurring disease. *Arthritis Rheum.* 43, 2110-2120.
- Majno, G., Gabbiani G., Hirschel B.J., Ryan G.B. and Statkov P.R. (1971). Contraction of granulation tissue *in vitro*: similarity to smooth muscle. *Science (Washington)*. 173, 548-550.
- Malcom J.E. and Pound D.P.B. (1971). Direction of spiral of the umbilical cord. *J. R. Coll. Gen. Pract.* 21, 746-747.
- Malpas P. (1964). Length of the human umbilical cord at term. *Br. Med. J.* 1, 673-674.
- Malpas P. and Symonds E.M. (1966). Observations on the structure of the human umbilical cord. *Surg. Gynecol. Obstet.* 123, 746-50.
- Margossian T., Reppel L., Makdissy N., Stoltz J.F., Bensoussan D. and Huselstein C. (2012). Mesenchymal stem cells derived from Wharton's jelly: Comparative phenotype analysis between tissue and *in vitro* expansion. *Biomed. Mater. Eng.* 22, 243-254.
- Martin B.F. and Tudor R.G. (1980). The umbilical and paraumbilical veins of man. *J. Anat.* 130, 305-322.
- Martin J.A., Ellerbroek S.M. and Buckwalter J.A. (1997). Age-related decline in chondrocyte response to insulin-like growth factor-I: the role of growth factor binding proteins. *J. Orthop. Res.* 15, 491-498.
- Mauro A., Buscemi M. and Gerbino A. (2010). Immunohistochemical and transcriptional expression of matrix metalloproteinases in full-term human umbilical cord and human umbilical vein endothelial cells. *J. Mol. Histol.* 41, 367-377.
- Mauro A., Buscemi M., Provenzano S. and Gerbino A. (2011). Human umbilical cord expresses several vasoactive peptides involved in the local regulation of vascular tone: protein and gene expression of Orphanin, Oxytocin, ANP, eNOS and iNOS. *Folia Histochem. Cytobiol.* 49, 211-218.
- McGuirk J.P. and Weiss M.L. (2011). Promising cellular therapeutics for prevention or management of graft-versus-host disease (a review). *Placenta* 32 (Suppl 4), S304-S310.
- Meyer F.A., Laver-Rudich Z. and Tanenbaum R. (1983). Evidence for a mechanical coupling of glycoprotein microfibrils with collagen fibrils in Wharton's jelly. *Biochim. Biophys. Acta* 755, 376-387.
- Messai H., Duchossoy Y., Khatib A.M., Panasyuk A. and Mitrovic D. (2000). Articular chondrocytes from aging rats respond poorly to insulinlike growth factor-1: an altered signaling pathway. *Mech. Ageing Dev.* 115, 21-37.
- Miki T., Lehmann T., Cai H., Stolz D.B. and Strom S.C. (2005). Stem cell characteristics of amniotic epithelial cells. *Stem Cells* 23, 1549-1559.
- Mitchell K.E., Weiss M.L., Mitchell B.M., Martin P., Davis D., Morales L., Helwig B., Beerstrauch M., Abou-Easa K., Hildreth T., Troyer D. and Medicetty S. (2003). Matrix cells from Wharton's jelly form neurons and glia. *Stem Cells* 21, 50-60.
- Mizoguchi M., Suga Y., Sanmano B., Ikeda S. and Ogawa H. (2004). Organotypic culture and surface plantation using umbilical cord epithelial cells: morphogenesis and expression of differentiation markers mimicking cutaneous epidermis. *J. Dermatol. Sci.* 35, 199-206.
- Myatt L. (1992). Control of vascular resistance in the human placenta. *Placenta* 13, 329-341.
- Nanaev A.K., Kohen G., Milovanov A.P., Domogatsky S.P. and Kaufmann P. (1997). Stromal differentiation and architecture of the human umbilical cord. *Placenta* 18, 53-64.
- Nekanti U., Rao V.B., Bahirvani A.G., Jan M., Totey S. and Ta M. (2010). Long-term expansion and pluripotent marker array analysis of Wharton's jelly-derived mesenchymal stem cells. *Stem Cells Dev.* 19, 117-130.
- Pałka J., Bańkowski E. and Jaworski S. (2000). An accumulation of IGF-I and IGF-binding proteins in human umbilical cord. *Mol. Cell. Biochem.* 206, 133-139.
- Parry E.W. (1970). Some electron microscope observations on the mesenchymal structures of full-term umbilical cord. *J. Anat.* 107, 505-518.
- Prasanna S.J. and Jahnvi V.S. (2011). Wharton's jelly mesenchymal stem cells as off-the-shelf cellular therapeutics: a closer look into their regenerative and immunomodulatory properties. *Open Tissue Eng. Regen. Med. J.* 4, 28-38.
- Quan A., Leung S.W.S., Lao T.T. and Man R.Y.K. (2003). 5-hydroxytryptamine and thromboxane A2 as physiologic mediators of human umbilical artery closure. *J. Soc. Gynecol. Invest.* 10, 490-495.
- Rao C.V., Li X., Toth P. and Lei Z.M. (1995). Expression of epidermal growth factor, transforming growth factor-alpha, and their common receptor genes in human umbilical cords. *J. Clin. Endocrinol. Metab.* 80, 1012-1020.
- Ryynänen J., Tan E.M., Hoffren J., Woodley D.T. and Sollberg S. (1993). Type VII collagen gene expression in human umbilical tissue and cells. *Lab. Invest.* 69, 300-304.
- Romanov Y.A., Svintsitskaya V.A. and Smirnov V.N. (2003). Searching for alternative sources of postnatal human mesenchymal stem cells: candidate MSC-like cells from umbilical cord. *Stem Cells* 21, 105-110.
- Romanowicz L. and Galewska Z. (2011). Extracellular matrix remodeling of the umbilical cord in pre-eclampsia as a risk factor for fetal hypertension. *J. Pregnancy* 2011, 542695
- Sarugaser R., Lickorish D., Baksh D., Hosseini M.M. and Davies J. E. (2005). Human umbilical cord perivascular (HUCPV) cells: a source of mesenchymal progenitors. *Stem Cells* 23, 220-229.
- Sarugaser R., Ennis J., Stanford W.L. and Davies J.E. (2009). Isolation, propagation, and characterization of human umbilical cord perivascular cells (HUCPVCs). *Methods Mol. Biol.* 482, 269-279.
- Scott J.M. and Wilkinson R. (1978). Further studies on the umbilical cord and its water content. *J. Clin. Pathol.* 31, 944-948.
- Sivalingam J., Krishnan S., Ng W.H., Lee S.S., Phan T.T. and Kon O.L. (2010). Biosafety assessment of site-directed transgene integration in human umbilical cord-lining cells. *Mol. Ther.* 18, 1346-1356.
- Sobolewski K., Bańkowski E., Chyczewski L. and Jaworski S. (1997). Collagen and glycosaminoglycans of Wharton's jelly. *Biol. Neonate* 71, 11-21.
- Sobolewski K., Małkowski A., Bańkowski E. and Jaworski S. (2005). Wharton's jelly as a reservoir of peptide growth factors. *Placenta* 26, 747-752.
- Skulstad S.M., Ulriksen M., Rasmussen S. and Kiserud T. (2006). Effect of umbilical ring constriction on Wharton's jelly. *Ultrasound Obstet. Gynecol.* 28, 692-698.
- Takechi K., Kuwabara Y. and Mizuno M. (1993). Ultrastructural and immunohistochemical studies of Wharton's jelly umbilical cord cells. *Placenta* 14, 235-245.
- Tamura M., Kawabata A., Ohta N., Uppalapati L., Becker K.G. and Troyer D. (2011). Wharton's jelly stem cells as agents for cancer therapy. *Open Tissue Eng. Regen. Med. J.* 4, 39-47.
- Tantbirojn P., Saleemuddin A., Sirois K., Crum C.P., Boyd T.K.,

Classical and novel features of human Wharton's jelly cells

- TwoRoger S. and Parast M.M. (2009). Gross abnormalities of the umbilical cord: related placental histology and clinical significance. *Placenta* 30, 1083-1088.
- Tee J.Y., Vaghjiani V., Liu Y.H., Murthi P., Chan J., Manuelpillai U. (2013). Immunogenicity and Immunomodulatory Properties of Hepatocyte-like Cells Derived from Human Amniotic Epithelial Cells. *Curr. Stem Cell Res. Ther.* 8, 91-99.
- Troyer D.L. and Weiss M.L. (2008). Concise review: Wharton's jelly-derived cells are a primitive stromal cell population. *Stem Cells* 26, 591-599.
- Vizza E., Correr S., Goranova V., Heyn R., Muglia U. and Papagianni V. (1995). The collagen fibrils arrangement in the Wharton's jelly of full-term human umbilical cord. *Ital. J. Anat. Embryol.* 100 (suppl 1), 495-501.
- Vizza E., Correr S., Goranova V., Heyn R., Angelucci P.A., Forleo R. and Motta P.M. (1996). The collagen skeleton of the human umbilical cord at term. A scanning electron microscopy study after 2N-NaOH maceration. *Reprod. Fertil. Dev.* 8, 885-894.
- Wang L., Tran I., Seshareddy K., Weiss M.L. and Detamore M.S. (2009). A comparison of human bone marrow-derived mesenchymal stem cells and human umbilical cord-derived mesenchymal stromal cells for cartilage tissue engineering. *Tissue Eng. Part A* 15, 2259-2266.
- Wang L., Ott L., Seshareddy K., Weiss M.L. and Detamore MS. (2011). Musculoskeletal tissue engineering with human umbilical cord mesenchymal stromal cells. *Regen. Med.* 6, 95-109.
- Weiss M.L., Anderson C., Medicetty S., Seshareddy K.B., Weiss R.J., Van der Werff I., Troyer D. and McIntosh K.R. (2008). Immune properties of human umbilical cord Wharton's jelly-derived cells. *Stem Cells* 26, 2865-2874.
- Wyburn G.M. (1939). The formation of the umbilical cord and the umbilical region of the anterior abdominal wall. *J. Anat.* 73, 289-310.9.
- Yamada K., Shimizu S. and Takahashi N. (1983). Histochemical demonstration of asparagine-linked oligosaccharides in glycoproteins of human placenta and umbilical cord tissues by means of almond glycopeptidase digestion. *Histochem. J.* 15, 1239-1250.

Accepted April 18, 2013