

Review

Claudins as diagnostic and prognostic markers in gynecological cancer

István Szabó¹, András Kiss², Zsuzsa Schaff² and Gábor Sobel¹

¹2nd Department of Obstetrics and Gynecology and ²2nd Department of Pathology, Semmelweis University, Budapest, Hungary

Summary. Claudins are the main protein components of tight junctions (TJs) which function as selective barriers by controlling paracellular diffusion, maintain cellular polarity and play a role in signal transduction. The expression pattern of the 24 known members of the claudin family proved to be organ and tissue specific. The up- or downregulation of individual claudins has been described, especially during carcinogenesis. A significant increase of claudins-1 and -7 was detected in premalignant cervical lesions and invasive cancer compared with normal cervical epithelia. Claudins-3 and -4 were elevated in endometrial cancer. Claudin-1 overexpression characterized type II (seropapillary) endometrial carcinoma, while claudin-2 was elevated in type I (endometrioid) carcinoma. Claudins-3 and -4 were highly expressed in serous ovarian carcinoma. The expression data on claudins in different premalignant and malignant alterations suggest that these proteins might serve as diagnostic and prognostic markers and might be targets for future therapy.

Key words: Claudins, Tight junction, Cervical cancer, Endometrial cancer, Ovarian cancer

Introduction

Cell adhesion is highly important in the organization of the polarized structure of epithelial tissue and is critical in cell-cell and cell-extracellular matrix (ECM) interactions (Balda and Matter, 2008). Intercellular junctions, of which several types are known, define epithelial organization and preserve tissue integrity. The junctional complex is composed of tight junction (TJ) (zonula occludens), adherens junction, desmosome and

gap junction. The TJ is a continuous circumferential beltlike structure at the most apical pole of epithelial cells. TJs function as selective barriers by controlling paracellular diffusion of water and ions (permselectivity, gate function), they are responsible for the maintenance of cell polarity (fence function), and are connected with actin cytoskeleton (Tsukita et al., 2008). More recently it has become clear that TJs play role in cell signaling and are involved in the regulation of cell proliferation (Balda and Matter, 2008; Paris et al., 2008; Tsukita et al., 2008).

Electron microscopic and freeze fracture studies suggested the presence of integral membrane proteins in TJs, however it was only in 1993 that Furuse et al. discovered the first TJ protein named occludin (Furuse et al., 1993). It was soon proved that the molecular backbones, the main constituents of TJ strands are a large family of transmembrane proteins, the claudins (20-27 kDa) (Furuse et al., 1998). The claudin protein family has 24 members (at least in mice and humans) and homotypic and/or heterotypic intercellular interactions are formed between the different claudin types (Tsukita et al., 2001). TJs structurally consist of transmembrane and membrane-associated proteins and are linked to components of the cytoskeleton (Schneeberg and Lynch, 2004). The transmembrane claudins, together with occludin, junctional adhesion molecules 1, 2 (JAM 1, 2) and the newly discovered integral membrane protein tricellulin form bi- or tricellular interactions between neighboring cells (González-Mariscal et al., 2007). Claudins consist of a larger and smaller extracellular loop, 4 transmembrane domains and C- and N-terminal ends, which bind to other proteins such as ZO-1,-2,-3 and interact with perijunctional filamentous actin both directly and indirectly through other proteins such as α -catenin and cingulin, connected to the cytoskeleton (Shen et al., 2008).

The expression profile of individual claudins varies among tissues, showing a characteristic claudin pattern.

These data suggest that different claudins play specific physiological roles in different tissues (Honda et al., 2007). More recently, a dynamic model of TJ components demonstrated that the TJ undergoes constant remodeling, which may contribute to TJ assembly and regulation. Rapid TJ remodeling occurs in response to extracellular stimuli (Shen et al., 2008). The presence of phosphorylation sites and PDZ binding motives in claudins suggest a role in signal transduction for proliferation and other cellular functions (Honda et al., 2007).

Recently, several publications have proved alterations in the expression of different TJ proteins, first of all claudins in cancer cells. Up- or downregulation of different types of claudins has been described (for reviews see Morin, 2005; Hewitt et al., 2006; Oliveira and Morgado-Díaz, 2007; Förster, 2008; Tsukita et al., 2008). Changes of claudin expression at gene and protein levels during carcinogenesis were detected, suggesting the role of claudins as progression markers in several cancers. The expression pattern of claudins in tumors proved to be organ and tissue dependent (Kleinberg et al., 2008).

Alterations of claudin expression have been observed in gynecological cancers as well, including our studies on cervical and endometrial cancers and premalignant lesions (Sobel et al., 2005a,b, 2006). The current review summarizes the most important alterations observed during the most common

gynecological malignancies such as cervical, endometrial and ovarian cancers and premalignant lesions.

Claudin expression in cervical cancer and premalignant lesions

Cervical cancer is the second most common cancer among women worldwide after breast cancer. The progression of early changes from normal cervical squamous epithelium to premalignant cervical intraepithelial neoplasia (CIN I, II, III), in situ carcinoma (CIS) and invasive cancer is well defined (Baak et al., 2009; Wang and Sherman, 2009). Cell-to-cell contacts are especially important in the highly resistant cervical epithelium, whose organization is altered during carcinogenesis even in early lesions. A large body of knowledge, based on the discovery of H. Zur Hausen (1976a,b), supports that the high risk types of human papilloma virus (HPV) are strongly associated with cervical cancer.

Several molecular changes have been described during the progression of cervical cancer, even from the early stages. Aberrations of p16^{INK4A}, p27^{KIP1}, cyclin E, CDK4 are considered early events in HPV 16- and 18-associated carcinoma, whereas others, like cyclin D1 and p53 alterations are late events (Bahnassy et al., 2007). Overexpression of cyclins, especially cyclin A, is a poor prognostic factor in cervical cancer (Shiohara et al.,

Table 1. Expression, up- or downregulation of claudins in gynecological cancers.

Tissue	Expression of claudins	References
Cervix	Studied: 1, 2, 3, 4, 7,	
Normal	1, 2, 4, 7 present	Chen et al., 2003; Lee et al., 2005; Sobel et al., 2005a,b
CIN/CIS	1, 2, 4, 7 up	Chen et al., 2003; Lee et al., 2005; Sobel et al., 2005a,b
Invasive carcinoma	1, 2, 4, 7 up	Chen et al., 2003; Lee et al., 2005; Sobel et al., 2005a; Vázquez-Ortiz et al., 2005
Endometrium	Studied: 1, 2, 3, 4, 5, 7	
Normal	1, 2, 3, 4, 5, 7 present	Soini, 2005; Sobel et al., 2006
Endometriosis	3, 4, 7 down	Gaetje et al., 2008; Pan et al., 2008
Hyperplasia	3, 4 up	Sobel et al., 2006; Pan et al., 2008
Carcinoma (Not specified)	1, 2, 3, 4, 5, 7 up	Soini, 2005
Type1	1 down, 2 up, 7 up (1) 3, 4 up (1, 2)	(1) Sobel et al., 2006; (2) Pan et al., 2008
Type2	1 up, 2 down (1) 3, 4 (1, 2) up	(1)Sobel et al., 2006; (2)Santin et al., 2007
Ovary	Studied: 1, 2, 3, 4, 5, 7, 10	
Adenoma, Cystadenoma	3, 4 down	Hough et al., 2000; Rangel et al., 2003; Heinzlmann-Schwarz et al., 2004; Hibbs et al., 2004; Lu et al., 2004; Santin et al., 2004; Agarwal et al., 2005; Morin, 2005; Bignotti et al., 2006; Soini, 2005; Zhu et al., 2006; Choi et al., 2007; Honda et al., 2007; Litkouhi et al., 2007; Kleinberg et al., 2008; Huang et al., 2009
Serous carcinoma	3, 4 up 7 up 10 up	Bignotti et al., 2006; Tassi et al., 2008 Bignotti et al., 2006

Claudins in gynecological cancer

2005). P16^{INK4A} became a predictive biomarker in cervical preinvasive and invasive neoplasia (Murphy et al., 2005). Alterations of different types of keratins have been observed in cervical cancer (Carrilho et al., 2004; Regauer and Reich, 2007). Ep-CAM expression in cervical epithelia correlated with increased proliferation and disappeared in terminal differentiation (Litvinov et al., 1996).

In the majority of cancers, claudins are downregulated and decreased gene and protein expressions can be detected (Tökés et al., 2005a,b). In cervical cancer, however, several claudins are upregulated (Table 1). Our group (Sobel et al., 2005a), studying 105 cervical samples, detected that claudins-1, -2, -4, and -7 were significantly increased in CIN I/II and CIN III/CIS lesions compared with normal epithelium (Fig. 1a,b). Expression of claudins-1 and -7 was highest in CIN III/CIS alterations (Fig. 1b). Reduced expression of claudins-1, -2, -4 and -7 was observed in the majority

of invasive cervical cancer cases as compared with CIN/CIS lesions, although claudin expression in invasive carcinoma was still higher than in normal cervical epithelium (Fig. 1c-e). Further, claudin-2 colocalized with another TJ protein, occludin, in normal cervical squamous epithelium and both were elevated in CIN/CIS alterations (Sobel et al., 2005b). The HPV receptor syndecan-1 colocalized with claudins-1, -4 and -7 in normal cervical epithelium, but increased in CIN/CIS lesions (Sobel et al., 2005b). Lee et al (2005) analyzed 89 cervical samples and detected gradually increased expressions of claudins-1 and -7 in accordance with progression from low grade squamous intraepithelial lesion (LSIL) to high grade SIL (HSIL) and invasive carcinoma. These authors, however, could not detect claudins-1 and -7 in normal cervical epithelia. Contrary to their study, our observations and those of others proved the presence of claudin-1 in normal squamous epithelia in the cervix and other organs such

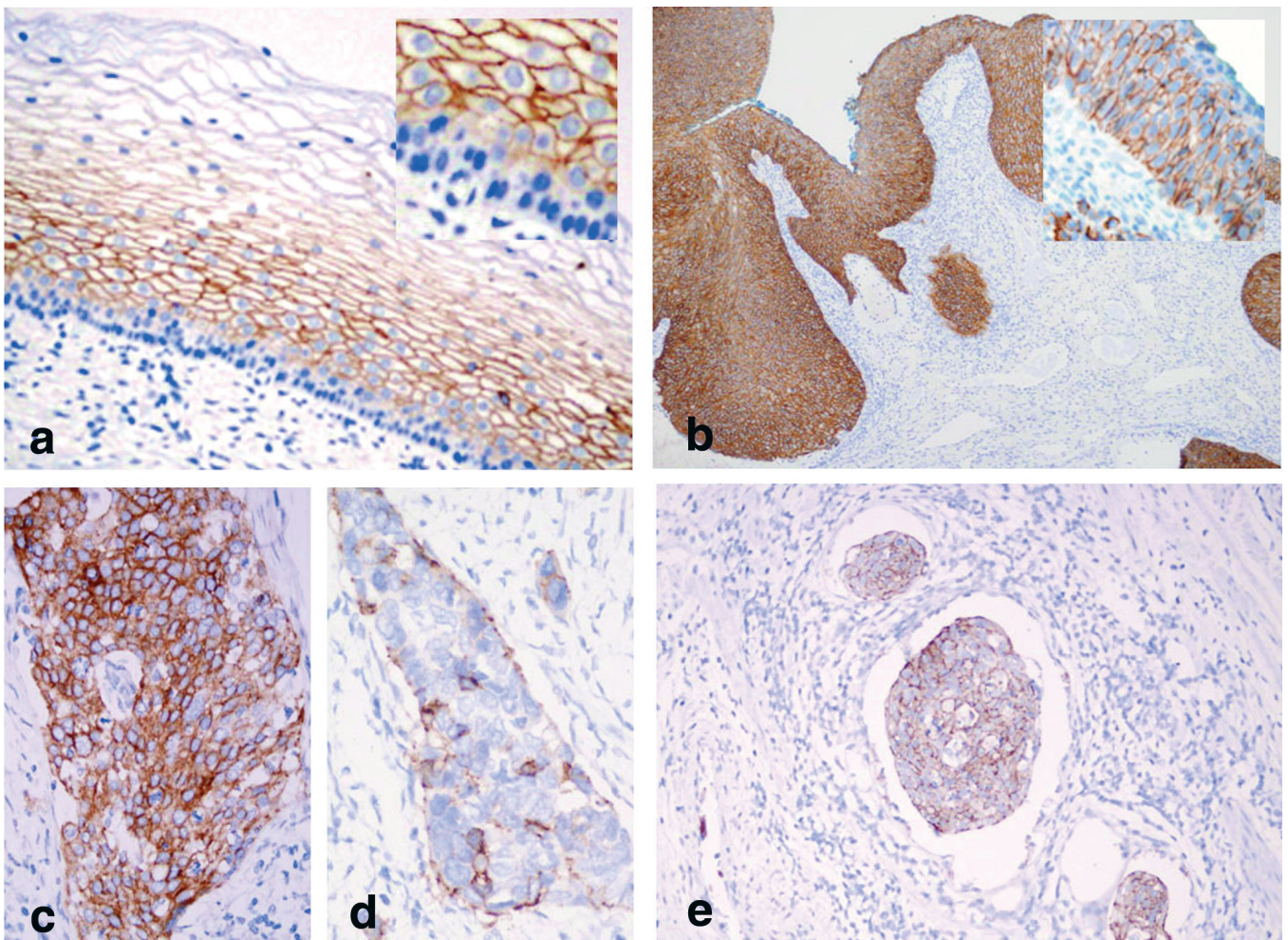


Fig. 1. Claudin-1 by immunohistochemistry in normal cervical epithelium (a), cervical intraepithelial neoplasia III (b), invasive carcinoma (c, d) and lymphatic invasion (d). Hematoxylin stain. a, c-e, x250; b, x100; insert in a, x400

as the esophagus (Györfy et al., 2005; Lioni et al., 2007), tongue (Bello et al., 2008) and oral mucosa (dos Reis et al., 2008). Other studies (Chen et al., 2003), corresponding with previous observations, detected increased claudin-1 expression by cDNA and tissue microarray in premalignant cervical lesions and in invasive cancer.

Claudins-1 and -7 are closely related TJ proteins (Hewitt et al., 2006). It is not surprising that they are present in the same type of epithelium, as cervical squamous epithelium and the alterations, up- or downregulations of the two claudins are parallel in cervical and other cancers, as in prostatic adenocarcinomas (Sheehan et al., 2007), tongue cancer (Bello et al., 2008) and oral squamous carcinoma (dos Reis et al., 2008). Increased expression of claudin-1 was detected in melanomas suggesting that it contributes to melanoma cell motility (Leotlela et al., 2007). Loss of claudin-1 expression correlated with malignancy of hepatocellular carcinoma (Higashi et al., 2007) and decreased with recurrence status in breast cancer (Morohashi et al., 2007). Claudin-1 has been suggested as a prognostic marker for patient survival in renal cell carcinomas (Fritzsche et al., 2008).

Increased expression of claudin-1 was detected in oral squamous cell carcinomas, especially in those with perineural and lymph node metastases and it was implied that this protein is associated with aggressive tumor behavior (dos Reis et al., 2008). Increased claudin-1 overexpression was observed in colorectal cancer, hinting at a link between overexpression of claudin-1 and colorectal carcinogenesis (Grone et al., 2007). It has been suggested that overexpression of claudin-1 may contribute to invasion through destabilization of TJs, resulting in loss of adhesion (dos Reis et al., 2008). In another study, however, claudin-1 acted as a metastasis

suppressor and correlated with clinical outcome in lung adenocarcinoma. Patients with low claudin-1 expression had shorter overall survival (Chao et al., 2009).

Claudin expression in endometrium, endometriosis and endometrial carcinoma

Endometrial carcinoma (EC) is the most prevalent gynecological cancer in the developed countries (Silverberg et al., 2003; Doll et al., 2008) and is increasing in frequency compared with cervical cancer (Mutter et al., 2009). Two biologically and histopathologically classified distinct types, referred to as types I and II, correspond to the endometrioid and non-endometrioid types (Silverberg et al., 2003; Doll et al., 2008; Mutter et al., 2009). Type I is the more common form which accounts for >80% of ECs, is low grade, estrogen-dependent, associated with endometrial hyperplasia and has better prognosis. Type II is more aggressive, nonestrogen-related, high grade and lacks association with endometrial hyperplasia (Goff, 2005; Sobel et al., 2006). Several genetic abnormalities have been detected and differently expressed in the two types of ECs (Hough et al., 2000; Matias-Guiu et al., 2001; Wu et al., 2003; Hecht and Mutter, 2006; Sobel et al., 2006; Stewart et al., 2006; Doll et al., 2008; Jia et al., 2008; Fadare and Zheng, 2009; Mutter et al., 2009) and a dualistic model of endometrial carcinogenesis was proposed (Sherman et al., 1995; Lax and Kurman, 1997). Based on molecular genetic data, ECs likely develop as the result of stepwise accumulation of genetic alterations, oncogene activation and tumor suppressor gene inactivation (Doll et al., 2008). The molecular pathogenesis, however, is not exactly clear. In this respect, alterations of TJ proteins, which might play role in carcinogenesis, are interesting.

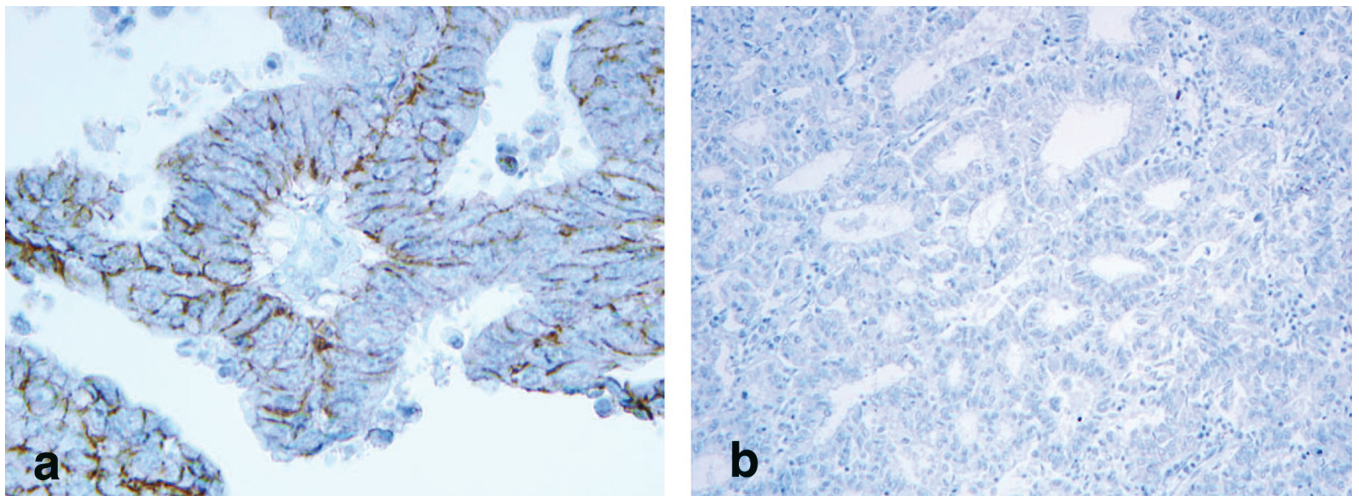


Fig. 2. Positive reaction of claudin-1 by immunohistochemistry in type II (seropapillary, **a**) and negative reaction in type I (endometrioid, **b**) endometrial cancer. Hematoxylin. x 250

Studies have shown increased protein expression of CLDNs-1, -2, -3, -4, -5 and -7, although type I and II ECs have not been separated (Soini, 2005). Sobel et al. (2006) differentiated EC on the basis of claudin expression. Type I (endometrioid) EC and endometrial glandular hyperplasia expressed low CLDN-1 and high CLDN-2 proteins and mRNA. Type 2 (seropapillary, non-endometrioid) EC showed high CLDN-1 and low CLDN-2 expression (Fig. 2). CLDN-3 was significantly higher in both types of EC, compared with normal proliferative phase endometrium. Claudin-4 was higher in type I carcinoma compared with the proliferative phase. More recently Santin et al. (2007), using gene expression profiling, identified high expression of CLDNs-3 and -4 in a limited set of uterine serous papillary carcinoma (type II). This finding is important because CLDNs-3 and -4 serve as low- and high-affinity receptors for the cytotoxic *Clostridium perfringens* enterotoxin (CPE), so it might have therapeutic significance.

Altered expression of claudins-3 and -4 was detected in ectopic endometrium of 35 women with endometriosis (Pan et al., 2008). Expression of claudins-3 and -4 was significantly lower in ectopic endometrium than in healthy controls both at mRNA and protein levels. Authors suggest that down-regulation of claudins in ectopic endometrium might play a pathogenetic role in endometriosis (Pan et al., 2008). Expression of claudins-3 and -4 was found to be upregulated in endometrial atypical hyperplasia and endometrioid adenocarcinoma, compared with normal endometrium (Pan et al., 2007). Thirteen members of the claudin family were analysed by microarray analysis in endometrium and peritoneal endometriosis (Gaetje et al., 2008). Diminished expression of claudins-3, -4 and -7 was detected in ectopic endometrium.

Claudin expression in ovarian cancer

Ovarian cancer (OC) is the sixth most common malignancy in women and the leading cause of mortality from gynecological cancer, at least in the USA (Greenlee et al., 2000). Difficulties in diagnosis and treatment of OC is partly responsible for the low survival rate (Stewart et al., 2006). Large-scale serial analysis of gene expression has shown genes differently expressed in OC (Hough et al., 2000; Stewart et al., 2006). Some of the genes overexpressed in OC are claudins-3, -4, HE4, mucin-1, epithelial cell adhesion molecule, etc (Hough et al., 2000; Hibbs et al., 2004; Gilks et al., 2005; Stewart et al., 2006). Serous carcinoma is the most common type of OC, and has been graded as a moderately and poorly differentiated carcinoma (Hsu et al., 2005). A dualistic model divides OC into low and high grade, associated with distinct molecular alterations (Shih and Kurman, 2004). Serum markers, such as CA 125, have been widely used in the detection of OC, although with varying specificity (Rosen et al., 2005; Choi et al., 2007).

Claudin-3 and -4 are receptors for CPE and are overexpressed in epithelial OC (Rangel et al., 2003; Lu et al., 2004; Santin et al., 2004; Agarwal et al., 2005; Morin, 2005; Zhu et al., 2006; Litkouhi et al., 2007; Kleinberg et al., 2008). The second extracellular loop of claudins-3 and -4 interacts with CPE and causes lysis of the cells expressing these two proteins (Katahira et al., 1997). It was shown that intraperitoneal administration of CPE caused inhibition of chemotherapy-resistant human OC xenografts (Santin et al., 2005).

Gene expression studies documented high expression of claudins-3 and -4 (Hough et al., 2000; Rangel et al., 2003; Heinzelmann-Schwarz et al., 2004; Hibbs et al., 2004; Lu et al., 2004; Santin et al., 2004;

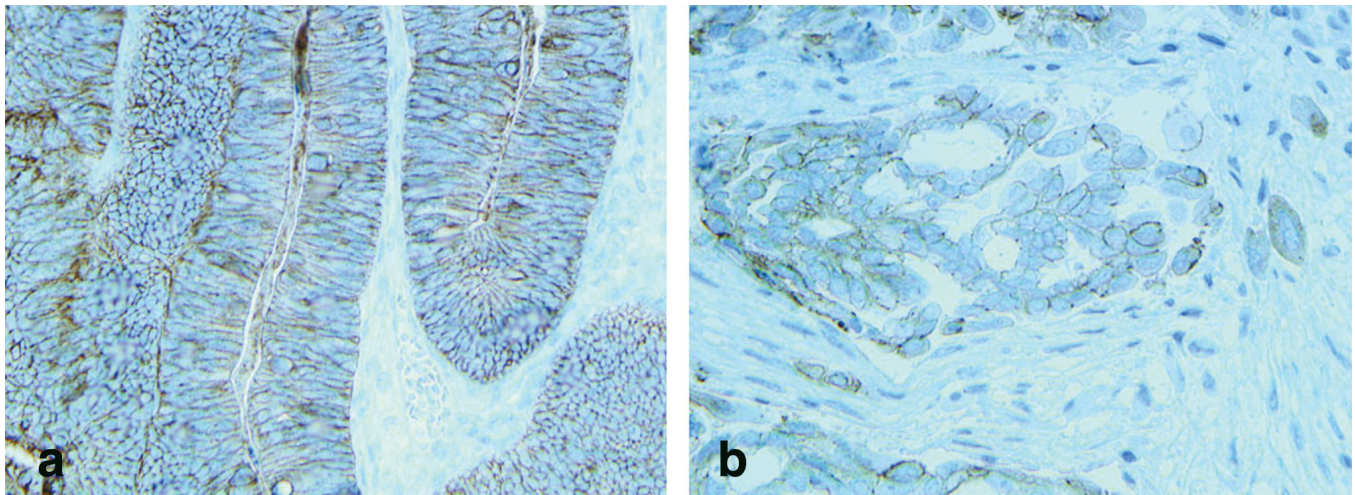


Fig. 3. Strong positive reaction of claudin-4 in serous epithelial ovarian carcinoma. Hematoxylin. a, x 100; b, x 250

Zhu et al., 2004; Bignotti et al., 2006; D'Souza et al., 2007; Honda et al., 2007; Litkouhi et al., 2007; Zhu and Sundfeldt, 2007), claudin-7 (Bignotti et al., 2006; Tassi et al., 2008) and claudin-10 (Bignotti et al., 2006) in OC. Studies, however, comparing benign ovarian tumors with OC were less conclusive (Rangel et al., 2003; Zhu et al., 2006). Both claudins-3 and -4 were, however, expressed at higher levels in ovarian serous cancers (Fig. 3) than in adenomas and borderline tumors (Choi et al., 2007).

Claudin-7 was found to be significantly overexpressed in all main histological types of ovarian epithelial carcinomas and in single disseminated cells in the peritoneal cavity (Tassi et al., 2008). Based on the above mentioned data, overexpressed claudins might have a potential role as a novel diagnostic marker.

Studies suggested that DNA methylation is a mechanism for claudin-4 in OC and CPE is an agent binding to it. Litkouhi et al. (2007) treated epithelial ovarian cells with CPE and detected TJ alterations. However, claudin-4 overexpression in epithelial OC did not correlate with survival or other clinical endpoints and was associated with hypomethylation according to these authors. Honda et al. (2007) determined that the loss of claudin-3 expression was not caused by the absence of Sp1 and Sp3 transcription factors, but rather by epigenetic factors such as DNA methylation, which was found to be inversely correlated with expression. According to these authors, during progression, OC activates regulatory elements such as enhancers, in order to express claudins-3 and -4 at high levels detected in the tumor. D'Souza et al. (2007) showed that claudin-4 may be phosphorylated by protein kinase C (PKC) in OC cells and overexpression of a mutated protein mimicking the phosphorylated state resulted in disruption of barrier function. Phorbol ester-mediated PKC activation of OC cells showed that TJ strength decreased and claudin-4 localization altered.

In a survival analysis of serous ovarian adenocarcinoma cases, high claudin-3 expression associated with shorter survival was found to be an independent negative prognostic factor (Choi et al., 2007). Claudin-3 and -7 expression in effusions independently predicted poor survival in OCs (Kleinberg et al., 2008).

More recently claudin-3 gene silencing with siRNA was found to suppress ovarian tumor growth and metastasis in mouse tumor models (Huang et al., 2009). Intratumoral injection of lipidoid/claudin-3 siRNA into human OVCAR-3 xenografts resulted in the silencing of claudin-3 with reduction of cell proliferation, tumor growth and increase of apoptotic cells (Huang et al., 2009). These data suggest that a lipid-like delivery system for claudin-3 siRNA might be a potential therapeutic option for OC (Huang et al., 2009).

Claudins-3 and -4 are among the most highly and consistently upregulated genes in OC (Honda et al., 2007; Huang et al., 2009), suggesting that these TJ proteins play role in ovarian carcinogenesis and

metastasis formation (Agarwal et al., 2003; Huang et al., 2009). Claudin-4 was found to be upregulated in other tumors, as in pancreatic cancer (Michl et al., 2001; Nichols et al., 2004; Borcka et al., 2007), however, it was associated with decreased invasiveness (Michl et al., 2003). This suggests that claudins play different roles in different organs and their cancers.

Concluding remarks

Claudins show similar pattern in the normal squamous epithelia of several organs such as cervix, oral mucosa, tongue, esophagus. Claudins-1 and -7 seem to be the most characteristic, claudin-3 is lacking and claudin-4 is lowly expressed in normal cervical squamous epithelia. Individual claudins, especially claudins-1 and -7, show increased expression during the early stages of carcinogenesis and in premalignant lesions and are higher in invasive carcinoma than in normal epithelia. The increased expression of claudins-1 and -7 might be useful as a marker in the detection of cervical premalignant and malignant cancers.

Endometrial cancer has shown increased protein expression of several claudins, such as CLDNs-1, -2, -3, -4, -5 and -7. Claudin-1 might serve as a marker to differentiate type I and type II endometrial cancer, so it might have prognostic significance.

Epithelial ovarian cancer is highly characterized by consistently upregulated CLDNs-3 and -4. It has recently been suggested that the highly restricted expression pattern of claudins in normal tissues, their frequent upregulation or ectopic activation in a diversity of cancers and their cell membrane-associated localization make claudins a good target for future therapy (Sahin et al., 2008).

Acknowledgements. This work was supported by grants ETT-049/2006 from the Hungarian Ministry of Health and NKFP-07-A1/2007 from the Hungarian Ministry of Education.

References

- Agarwal R., D'Souza T. and Morin P.J. (2005). Claudin-3 and claudin-4 expression in ovarian epithelial cells enhances invasion and is associated with increased matrix metalloproteinase-2 activity. *Cancer Res.* 65, 7378-7385.
- Baak J.P.A., Stoler M.H., Bean S.M., Anderson M.C. and Robboy S.J. (2009). Cervical precancer (intraepithelial neoplasia), including functional biomarkers and colposcopy. In: Robboy's pathology of the female reproductive tract. 2nd ed. Chapter 8. Robboy S.L., Mutter G.L., Prat J., Bentley R.C., Russel P. and Anderson M.C. (eds). Churchill Livingstone Elsevier Limited. UK, USA. pp 189-226.
- Bahnassy A.A., Zekri A.R.N., Saleh M., Lotayef M., Moneir M. and Shawki O. (2007). The possible role of cell cycle regulators in multistep process of HPV-associated cervical carcinoma. *BMC Clin. Pathol.* 7, 4.
- Balda M.S. and Matter K. (2008) Tight junctions and the regulation of gene expression. *Biochim. Biophys. Acta* 1788, 761-767.

Claudins in gynecological cancer

- Bello I.O., Vilen S.T., Niinimaa A., Kantola S., Soini Y. and Salo T. (2008). Expression of claudins 1, 4, 5 and 7 and occludin, and relationship with prognosis in squamous cell carcinoma of the tongue. *Hum. Pathol.* 39, 1212-1220.
- Bignotti E., Tassi R.A., Calza S., Ravaggi A., Romani C., Rossi E., Falcetti M., Odicino F.E., Pecorelli S. and Santin A.D. (2006). Differential gene expression profiles between tumor biopsies and short-term primary cultures of ovarian serous carcinomas: Identification of novel molecular biomarkers for early diagnosis and therapy. *Gynecol. Oncol.* 103, 405-416.
- Borka K., Kaliszky P., Szabó E., Lotz G., Kupcsulik P., Schaff Zs. and Kiss A. (2007). Claudin expression in pancreatic endocrine tumors as compared with ductal adenocarcinomas. *Virchow. Arch.* 450, 549-557.
- Carrilho C., Alberto M., Buane L. and David L. (2004). Keratins 8, 10, 13, and 17 are useful markers in the diagnosis of human cervix carcinomas. *Hum. Pathol.* 35, 546-551.
- Chao Y.C., Pan S.H., Yang S.C., Yu S.L., Che T.F., Lin C.W., Tsai M.S., Chang G.C., Wu C.H., Wu Y.Y., Lee Y.C., Hong T.M. and Yang P.C. (2009). Claudin-1 is a metastasis suppressor and correlates with clinical outcome in lung adenocarcinoma. *Am. J. Respir. Crit. Care Med.* 179, 123-133.
- Chen Y., Miller C., Mosher R., Zhao X., Deeds J., Morrissey M., Bryant B., Yang D., Meyer R., Cronin F., Gostout B.S., Smith-McCune K. and Schlegel R. (2003). Identification of cervical cancer markers by cDNA and tissue microarrays. *Cancer Res.* 63, 1927-1935.
- Choi Y.-L., Kim J., Kwon M.J., Choi J.-S., Kim T.-J., Bae D.-S., Koh S.S., In Y.-H., Park Y.W., Kim S.H., Ahn G. and Shin Y.K. (2007). Expression profile of tight junction protein claudin 3 and claudin 4 in ovarian serous adenocarcinoma with prognostic correlation. *Histol. Histopathol.* 22, 1185-1195.
- Doll A., Abal M., Rigau M., Monge M., Gonzalez M., Demajo S., Colás E., Llauradó M., Alazzouzi H., Planagumá J., Lohmann M.A., Garcia J., Castellvi S., Ramon y Cajal J., Gil-Moreno A., Xercavins J., Alameda F. and Reventós J. (2008). Novel molecular profiles of endometrial cancer-new light through old windows. *J. Steroid Biochem. Mol. Biol.* 108, 221-229.
- Dos Reis P.P., Bharadwaj R.R., Machado J., MacMillan C., Pintilie M., Sukhai M.A., Perez-Ordóñez B., Gullane P., Irish J. and Kamel-Reid S. (2008). Claudin 1 overexpression increases invasion and is associated with aggressive histological features in oral squamous cell carcinoma. *Cancer* 113, 3169-3180.
- D'Souza T., Indig F.E. and Morin P.J. (2007). Phosphorylation of claudin-4 by PKC Σ regulates tight junction barrier function in ovarian cancer cells. *Exp. Cell Res.* 313, 3364-3375.
- Fadare O. and Zheng W. (2009). Insights into endometrial serous carcinogenesis and progression. *Int. J. Clin. Exp. Pathol.* 2, 411-432.
- Förster C. (2008). Tight junctions and the modulation of barrier function in disease. *Histochem. Cell Biol.* 130, 55-70.
- Fritzsche F.R., Oelrich B., Johannsen M., Kristiansen I., Moch H., Jung K. and Kristiansen G. (2008). Claudin-1 protein expression is a prognostic marker of patient survival in renal cell carcinomas. *Clin. Cancer Res.* 14, 7035-7042.
- Furuse M., Hirase T., Itoh M., Nagafuchi A., Yonemura S. and Tsukita S. (1993). Occludin: a novel integral membrane protein localizing at tight junctions. *J. Cell Biol.* 123, 1777-1788.
- Furuse M., Fujita K., Hiiragi T., Fujimoto K. and Tsukita S. (1998). Claudin-1 and -2: novel integral membrane proteins localizing at tight junctions with no sequence similarity to occludin. *J. Cell Biol.* 141, 1539-1550.
- Gaetje R., Holtrich U., Engels K., Kissler S., Rody A., Karn T. and Kaufmann M. (2008). Differential expression of claudins in human endometrium and endometriosis. *Gynecol. Endocrinol.* 24, 442-449.
- Gilks C.B., Vanderhyden B.C., Zhu S., van de Rijn M. and Longacre T.A. (2005). Distinction between serous tumors of low malignant potential and serous carcinomas based on global mRNA expression profiling. *Gynecol. Oncol.* 96, 684-694.
- Goff B.A. (2005). Uterine papillary serous carcinoma: what have we learned over the past quarter century? *Gynecol. Oncol.* 98, 341-343.
- González-Mariscal L., Lechuga S. and Garay E. (2007). Role of tight junctions in cell proliferation and cancer. *Prog. Histochem. Cytochem.* 42, 1-57.
- Greenlee R.T., Murray T., Bolden S. and Wingo P.A. (2000). Cancer statistics, 2000. *CA Cancer J. Clin.* 50, 7-33.
- Grone J., Weber B., Staub E., Heinze M., Klaman I., Pilarsky C., Hermann K., Castanos-Velez E., Röpcke S., Mann B., Rosenthal A. and Buhr H.J. (2007). Differential expression of genes encoding tight junction proteins in colorectal cancer: frequent dysregulation of claudin-1, -8 and -12. *Int. J. Colorectal Dis.* 22, 651-659.
- Györfy H., Holczbauer Á., Nagy P., Szabó Zs., Kupcsulik P., Páska Cs., Papp J., Schaff Zs. and Kiss A. (2005). Claudin expression in Barrett's esophagus and adenocarcinoma. *Virch. Arch.* 447, 961-968.
- Hecht J.L. and Mutter G.L. (2006). Molecular and pathologic aspects of endometrial carcinogenesis. *J. Clin. Oncol.* 24, 4783-4791.
- Heinzelmann-Schwarz V.A., Gardiner-Garden M., Henshall S.M., Scurry J., Scolyer R.A., Davies M.J., Heinzelmann M., Kalish L.H., Bali A., Kench J.G., Edwards L.S., Vanden Bergh P.M., Hacker N.F., Sutherland R.L. and O'Brien P.M. (2004). Overexpression of the cell adhesion molecules DDR1, Claudin 3, and Ep-CAM in metaplastic ovarian epithelium and ovarian cancer. *Clin. Cancer Res.* 20, 4427-4436.
- Hewitt K.J., Agarwal R. and Morin P.J. (2006). The claudin gene family: expression in normal and neoplastic tissues. *BMC Cancer* 6, 186.
- Hibbs K., Skubitz K.M., Pambuccian S.E., Casey R.C., Burleson K.M., Oegema T.R. Jr, Thiele J.J., Grindle S.M., Bliss R.L. and Skubitz A.P.N. (2004). Differential gene expression in ovarian carcinoma. Identification of potential biomarkers. *Am. J. Pathol.* 165, 397-414.
- Higashi Y., Suzuki S., Sakaguchi T., Nakamura T., Baba S., Reinecker H.C., Nakamura S. and Konno H. (2007). Loss of claudin-1 expression correlates with malignancy of hepatocellular carcinoma. *J. Surg. Res.* 139, 68-76.
- Honda H., Pazin M.J., D'Souza T., Ji H. and Morin P.J. (2007). Regulation of the CLDN3 gene in ovarian cancer cells. *Cancer Biol. Ther.* 6, 1733-1742.
- Hough C.D., Sherman Baust C.A., Pizer E.S., Montz F.J., Im D.D., Rosenshein N.B., Cho K.R., Riggins G.J. and Morin P.J. (2000). Large-scale serial analysis of gene expression reveals genes differentially expressed in ovarian cancer. *Cancer Res.* 60, 6281-6287.
- Hsu C.-Y., Kurman R.J., Vang R., Wang T.-L., Baak J. and Shih I.-M. (2005). Nuclear size distinguishes low- from high-grade ovarian serous carcinoma and predicts outcome. *Hum. Pathol.* 36, 1049-1054.
- Huang Y.-H., Bao Y., Peng W., Goldberg M., Love K., Bumcrot D.A., Cole G., Langer R., Anderson D.G. and Sawicki J.A. (2009). Claudin-3 gene silencing with siRNA suppresses ovarian tumor

- growth and metastasis. *Proc. Natl. Acad. Sci. USA* 106, 3426-3430.
- Jia L., Liu Y., Yi X., Miron A., Crum P., Kong B. and Zheng W. (2008). Endometrial glandular dysplasia with frequent p53 gene mutation: a genetic evidence supporting its precancer nature for endometrial serous carcinoma. *Clin. Cancer Res.* 14, 2263-2269.
- Katahira J., Sugiyama H., Inoue N., Horiguchi Y., Matsuda M. and Sugimoto N. (1997). Clostridium perfringens enterotoxin utilizes two structurally related membrane proteins as functional receptors in vivo. *J. Biol. Chem.* 272, 26652-26658.
- Kleinberg L., Holth A., Trope C.G., Reich R. and Davidson B. (2008). Claudin upregulation in ovarian carcinoma effusions is associated with poor survival. *Hum. Pathol.* 39, 747-757.
- Lax S.F. and Kurman R.J. (1997). A dualistic model for endometrial carcinogenesis based on immunohistochemical and molecular genetic analyses. *Verh. Dtsch. Ges. Pathol.* 81, 228-232.
- Lee J.W., Lee S.J., Seo J., Song S.Y., Ahn G., Park C.S., Lee J.H., Kim B.G. and Bae D.S. (2005). Increased expressions of claudin-1 and claudin-7 during the progression of cervical neoplasia. *Gynecol. Oncol.* 97, 53-59.
- Leotlela P.D., Wade M.S., Duray P.H., Rhode M.J., Brown H.F., Rosenthal D.T., Dissanayake S.K., Earley R., Indig F.E., Nickoloff B.J., Taub D.D., Kallioniemi O.P., Meltzer P., Morin P.J. and Weeraratna A.T. (2007). Claudin-1 overexpression in melanoma is regulated by PKC and contributes to melanoma cell motility. *Oncogene* 26, 3846-3856.
- Lioni M., Brafford P., Andl C., Rustgi A., El-Deiry W., Herlyn M. and Smalley K.S.M. (2007). Dysregulation of claudin-7 leads to loss of E-cadherin expression and the increased invasion of esophageal squamous cell carcinoma cells. *Am. J. Pathol.* 170, 709-721.
- Litkoum B., Kwong J., Lo C.-M., Smedley J.G., McClane B.A., Aponte M., Gao Z., Sarno J.L., Hinners J., Welch W.R., Berkowitz R.S., Mok S.C., and Garner E.I.O. (2007). Claudin-4 overexpression in epithelial ovarian cancer is associated with hypomethylation and is a potential target for modulation of tight junction barrier function using a C-terminal fragment of Clostridium perfringens enterotoxin. *Neoplasia* 9, 304-314.
- Litvinov S.V., van Driel W., van Rhijn C.M., Bakker H.A., van Krieken H., Fleuren G.J. and Warnaar S.O. (1996). Expression of Ep-CAM in cervical squamous epithelia correlates with an increased proliferation and the disappearance of markers for terminal differentiation. *Am. J. Pathol.* 148, 865-875.
- Lu K.H., Patterson A.P., Wang L., Marquez R.T., Atkinson E.N., Baggerly K.A., Au J.L., Rosen D.G., Liu J., Hellstrom I., Smith D., Hartmann L., Fishman D., Berchuck A., Schmandt R., Whitaker R., Gershenson D.M., Mills G.B. and Bast R.C. Jr (2004). Selection of potential markers for epithelial ovarian cancer with gene expression arrays and recursive descent partition analysis. *Clin. Cancer Res.* 10, 3291-3300.
- Matias-Guiu X., Catusas L., Bussaglia E., Agarda H., Garcia A., Pons C., Muñoz J., Argüelles R., Machin P. and Prat J. (2001). Molecular pathology of endometrial hyperplasia and carcinoma. *Hum. Pathol.* 32, 569-577.
- Michl P., Buchholz M., Rolke M., Kunsch S., Löhr M., McClane B., Tsukita S., Leder G., Adler G. and Gress T.M. (2001). Claudin-4: A new target for pancreatic cancer treatment using Clostridium perfringens enterotoxin. *Gastroenterology* 121, 678-684.
- Michl P., Barth C., Buchholz M., Lerch M.M., Rolke M., Holzmann K.H., Menke A., Fensterer H., Giehl K., Lohr M., Leder G., Iwamura T., Adler G. and Gress T.M. (2003). Claudin-4 expression decreases invasiveness and metastatic potential of pancreatic cancer. *Cancer Res.* 63, 6265-6271.
- Morin P.J. (2005). Claudin proteins in human cancer: promising new targets for diagnosis and therapy. *Cancer Res.* 65, 9603-9606.
- Morohashi S., Kusumi T., Sato F., Odagiri H., Chiba H., Yoshihara S., Hakamada K., Sasaki M. and Kijima H. (2007). Decreased expression of claudin-1 correlates with recurrence status in breast cancer. *Int. J. Mol. Med.* 20, 139-143.
- Murphy N., Ring M., Heffron C.C.B.B., King B, Killalea A.G., Hughes C., Martin C.M., McGuinness E., Sheils O. and O'Leary J.J. (2005). p16^{INK4A}, CDC6, and MCM5: predictive biomarkers in cervical preinvasive neoplasia and cervical cancer. *J. Clin. Pathol.* 58, 525-534.
- Mutter G.L., Matias-Guiu X. and Lax S.F. (2009). Endometrial adenocarcinoma. In: Robboy's pathology of the female reproductive tract. 2nd ed. Chapter 16. Robboy S.L., Mutter G.L., Prat J., Bentley R.C., Russel P. and Anderson M.C. (eds). Churchill Livingstone Elsevier Limited. UK, USA. pp 393-426.
- Nichols L.S., Ashfaq R. and Iacobuzio-Donahue C.A. (2004). Claudin 4 protein expression in primary and metastatic pancreatic cancer: support for use as a therapeutic target. *Am. J. Clin. Pathol.* 121, 226-230.
- Oliveira S.S. and Morgado-Díaz J.A. (2007). Claudins: multifunctional players in epithelial tight junctions and their role in cancer. *Cell. Mol. Life Sci.* 64, 17-28.
- Pan X.Y., Wang B., Che Y.C., Weng Z.P., Dai H.Y. and Peng W. (2007). Expression of claudin-3 and claudin-4 in normal, hyperplastic and malignant endometrial tissue. *Int. J. Gynecol. Cancer* 17, 233-241.
- Pan X.Y., Li X., Weng Z.P. and Wang B. (2008). Altered expression of claudin-3 and claudin-4 in ectopic endometrium of women with endometriosis. *Fertil. Steril.* 91, 1692-1699.
- Paris L., Tonutti L., Vannini C. and Bazzoni G. (2008). Structural organization of the tight junctions. *Biochim. Biophys. Acta* 1778, 646-659.
- Rangel L.B., Agarwal R., D'Souza T., Pizer E.S., Alo P.L., Lancaster W.D., Gregoire L., Schwartz D.R., Cho K.R. and Morin P.J. (2003). Tight junction proteins claudin-3 and claudin-4 are frequently overexpressed in ovarian cancer but not in ovarian cystadenomas. *Clin. Cancer Res.* 9, 2567-2575.
- Regauer S. and Reich O. (2007). CK17 and p16 expression patterns distinguish (atypical) immature squamous metaplasia from high-grade cervical intraepithelial neoplasia (CIN III). *Histopathology* 50, 629-635.
- Rosen D.G., Wang L., Atkinson J.N., Yu Y., Lu K.H., Diamandis E.P., Hellstrom I., Mok S.C., Liu J. and Bast Jr R.C. (2005). Potential markers that complement expression of CA125 in epithelial ovarian cancer. *Gynecol. Oncol.* 99, 267-277.
- Sahin U., Koslowski M., Dhaene K., Usener D., Brandenburg G., Seitz G., Huber C. and Türeci Ö. (2008). Claudin-18 splice variant 2 is a pan-cancer target suitable for therapeutic antibody development. *Clin. Cancer Res.* 14, 7624-7634.
- Santin A.D., Zhan F., Bellone S., Palmieri M., Cane S., Bignotti E., Anfossi S., Gokden M., Dunn D., Roman J.J., O'Brien T.J., Tian E., Cannon M.J., Shaughnessy J. Jr and Pecorelli S. (2004). Gene expression profiles in primary ovarian serous papillary tumors and normal ovarian epithelium: identification of candidate molecular markers for ovarian cancer diagnosis and therapy. *Int. J. Cancer* 112, 14-25.
- Santin A.D., Zhan F., Cane S., Bellone S., Palmieri M., Thomas M.,

Claudins in gynecological cancer

- Burnett A., Roman J.J., Cannon M.J., Shaughnessy J. Jr and Pecorelli S. (2005). Gene expression fingerprint of uterine serous papillary carcinoma: identification of novel molecular markers for uterine serous cancer diagnosis and therapy. *Brit. J. Cancer* 92, 1561-1573.
- Santin A.D., Bellone S., Marizzoni M., Palmieri M., Siegel E.R., McKenney J.K., Hennings L., Comper F., Bandiera E. and Pecorelli S. (2007). Overexpression of claudin-3 and claudin-4 receptors in uterine serous papillary carcinoma: novel targets for a type-specific therapy using Clostridium perfringens enterotoxin (CPE). *Cancer* 109, 1312-1322.
- Schneeberg E.E. and Lynch R.D. (2004). The tight junction: a multifunctional complex. *Am. J. Physiol. Cell Physiol.* 286, C1213-1228.
- Sheehan G.M., Kallakury B.V., Sheehan C.E., Fisher H.A., Kaufman R.P. Jr and Ross J.S. (2007). Loss of claudins-1 and -7 and expression of claudins-3 and -4 correlate with prognostic variables in prostatic adenocarcinomas. *Hum. Pathol.* 38, 564-569.
- Shen L., Weber C.R. and Turner J.R. (2008). The tight junction protein complex undergoes rapid and continuous molecular remodeling at steady state. *J. Cell Biol.* 181, 683-695.
- Sherman M.E., Bur M.E. and Kurman R.J. (1995). p53 in endometrial cancer and its putative precursors: evidence for diverse pathways of tumorigenesis. *Hum. Pathol.* 26, 1268-1274.
- Shih Ie M. and Kurman R.J. (2004). Ovarian tumorigenesis: a proposed model based on morphological and molecular genetic analysis. *Am. J. Pathol.* 164, 1511-1518.
- Shiohara S., Shiozawa T., Miyamoto T., Feng Y.-Z., Kashima H., Kurai M., Suzuki A. and Konishi I. (2005). Expression of cyclins, p53, and Ki-67 in cervical squamous cell carcinomas: overexpression of cyclin A is a poor prognostic factor in stage Ib and II disease. *Virchov. Arch.* 446, 626-633.
- Silverberg S.G., Kurman R.J., Nogales F., Mutter G.L., Kubik-Huch R.A. and Tavassoli F.A. (2003). Epithelial tumours and related lesions. In: *Tumours of the breast and female genital organs. World Health Organization Classification of Tumours.* Tavassoli F.A. and Devilee P. (eds). IARC Press. Lyon. pp 221-232.
- Sobel G., Páska Cs., Szabó I., Kiss A., Kádár A. and Schaff Zs. (2005a). Increased expression of claudins in cervical squamous intraepithelial neoplasia and invasive carcinoma. *Hum. Pathol.* 36, 162-169.
- Sobel G., Szabó I., Páska Cs., Kiss A., Kovalszky I. and Schaff Zs. (2005b). Changes of cell adhesion and extracellular matrix (ECM) components in cervical intraepithelial neoplasias. *Pathol. Oncol. Res.* 11, 26-31.
- Sobel G., Németh J., Kiss A., Lotz G., Szabó I., Udvarhelyi N., Schaff Zs. and Páska Cs. (2006). Claudin 1 differentiates endometrioid and serous papillary endometrial adenocarcinoma. *Gynecol. Oncol.* 103, 591-598.
- Soini Y. (2005). Expression of claudins 1, 2, 3, 4, 5 and 7 in various types of tumours. *Histopathology* 46, 551-560.
- Stewart J.J., White J.T., Yan X., Collins S., Drescher C.W., Urban N.D., Hood L. and Biaoyang L. (2006). Proteins associated with cisplatin resistance in ovarian cancer cells identified by quantitative proteomics technology and integrated with mRNA expression levels. *Mol. Cell. Proteomics* 5, 433-443.
- Tassi R.A., Bignotti E., Falchetti M., Ravanini M., Calza S., Ravaggi A., Bandiera E., Facchetti F., Pecorelli S. and Santin A.D. (2008). Claudin-7 expression in human epithelial ovarian cancer. *Int. J. Gynecol. Cancer* 18, 1262-1271.
- Tsukita S., Furuse M. and Itoh M. (2001). Multifunctional strands in tight junctions. *Nat. Rev. Mol. Cell Biol.* 2, 285-293.
- Tsukita S., Yamazaki Y., Katsuno T., Tamura A. and Tsukita S. (2008). Tight junction-based epithelial microenvironment and cell proliferation. *Oncogene* 27, 6930-6938.
- Tökés A.M., Kulka J., Paku S., Máthé M., Páska Cs., Lódi Cs., Kiss A. and Schaff Zs. (2005a). The expression of five different claudins in invasive breast carcinomas: comparison of pT1pN1 and pT1pN0 tumours. *Pathol. Res. Pract.* 201, 537-544.
- Tökés A.M., Kulka J., Paku S., Szik Á., Páska Cs., Kaposi Novák P., Szilák L., Kiss A., Bögi K. and Schaff Zs. (2005b). Claudin -1, -3 and -4 proteins and mRNA expression in benign and malignant breast lesions: a research study. *Breast Cancer Res.* 7, R296-R305.
- Vázquez-Ortiz G., Ciudad C.J., Pina P., Vazquez K., Hidalgo A., Alatorre B., Garcia J.A., Salamanca F., Peralta-Rodríguez R., Rangel A. and Salcedo M. (2005). Gene identification by cDNA arrays in HPV-positive cervical cancer. *Arch. Med. Res.* 36, 448-458.
- Wang S.S. and Sherman M.E. (2009). Cervix: epidemiology of squamous neoplasia. In: *Robboy's pathology of the female reproductive tract.* 2nd ed. Chapter 7. Robboy S.L., Mutter G.L., Prat J., Bentley R.C., Russel P. and Anderson M.C. (eds). Churchill Livingstone Elsevier Limited. UK, USA. pp 173-188.
- Wu W., Slomovitz B.M., Celestino J., Chung L., Thornton A., Lu K.H. (2003). Coordinate expression of Cdc25B and ER-a is frequent in low-grade endometrioid endometrial carcinoma but uncommon in high-grade endometrioid and nonendometrioid carcinomas. *Cancer Res.* 63, 6195-6199.
- Zhu Y., Maric J., Nilsson M., Brannstrom M., Janson P.O. and Sundfeldt K. (2004). Formation and barrier function of tight junctions in human ovarian surface epithelium. *Biol. Reprod.* 71, 53-59.
- Zhu Y., Brannstrom M., Janson P.O. and Sundfeldt K. (2006). Differences in expression patterns of the tight junction proteins, claudin1, 3, 4 and 5, in human ovarian surface epithelium as compared to epithelia in inclusion cysts and epithelial ovarian tumours. *Int. J. Cancer* 118, 1884-1891.
- Zhu Y. and Sundfeldt K. (2007). Tight junction formation in epithelial ovarian adenocarcinoma. *Acta Obstet. Gynecol.* 86, 1011-1019.
- Zur Hausen H. (1976a). DNA viruses in human cancer: biochemical approaches. *Cancer Res.* 36, 414-416.
- Zur Hausen H. (1976b). *Condylomata acuminata* and human genital cancer. *Cancer Res.* 36, 530.