

Soluble sST2 isoform is related to ACT.

Panel a

Procedures	Male					Female				
siCtrl	1,1	0,99	1,01	0,98	0,89	0,9	1,01	1,01	1,01	0,98
siCtrl+DOX	3,32	3,52	3,62	4,32	3,1	3,32	4,32	3,63	3,62	3,52
siYY1+Dox	2,01	2,03	2,01	2,1	1,02	2,03	2,32	2,05	2,01	1,2
siCtrl	0,99	1	1,01	0,098	0,89	1,1	1,02	0,96	1,01	0,98
siCtrl+DOX	4,32	4,36	4,56	5,36	6,35	5,54	4,63	3,95	5,62	6,65
siYY1+Dox	2,56	2,65	3,62	2,52	2,54	2,15	2,32	2,62	2,33	2,52

Panel b

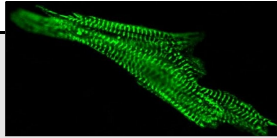
Procedures	Male					Female				
siCtrl	0,98	1,01	0,78	1,01	0,99	0,9	1,01	1,01	1,01	0,98
siCtrl+DOX	20,21	23,23	19,63	16,36	21,23	22,01	15,62	22,32	21,32	16,36
siYY1+Dox	12,32	12,32	11,14	14,32	12,32	10,22	11,02	12,32	13,62	14,32

Panel c_cTnT levels

Procedure	Male					Female				
siCtrl	5,32	5,32	6,32	5,25	4,52	5,32	5,25	4,62	6,32	5,14
siCtrl+DOX	15,32	15,36	16,32	15,41	14,32	16,32	15,25	18,63	20,32	14,65
siYY1+Dox	6,36	5,62	7,65	8,63	6,65	9,63	10,32	6,95	8,63	10,32
sST2-Fc+siYY	20,32	19,63	16,65	15,63	20,32	18,62	16,54	14,65	11,32	13,33
IgG	5,63	6,32	5,52	3,62	5,54	4,56	5,62	5,63	6,32	4,52

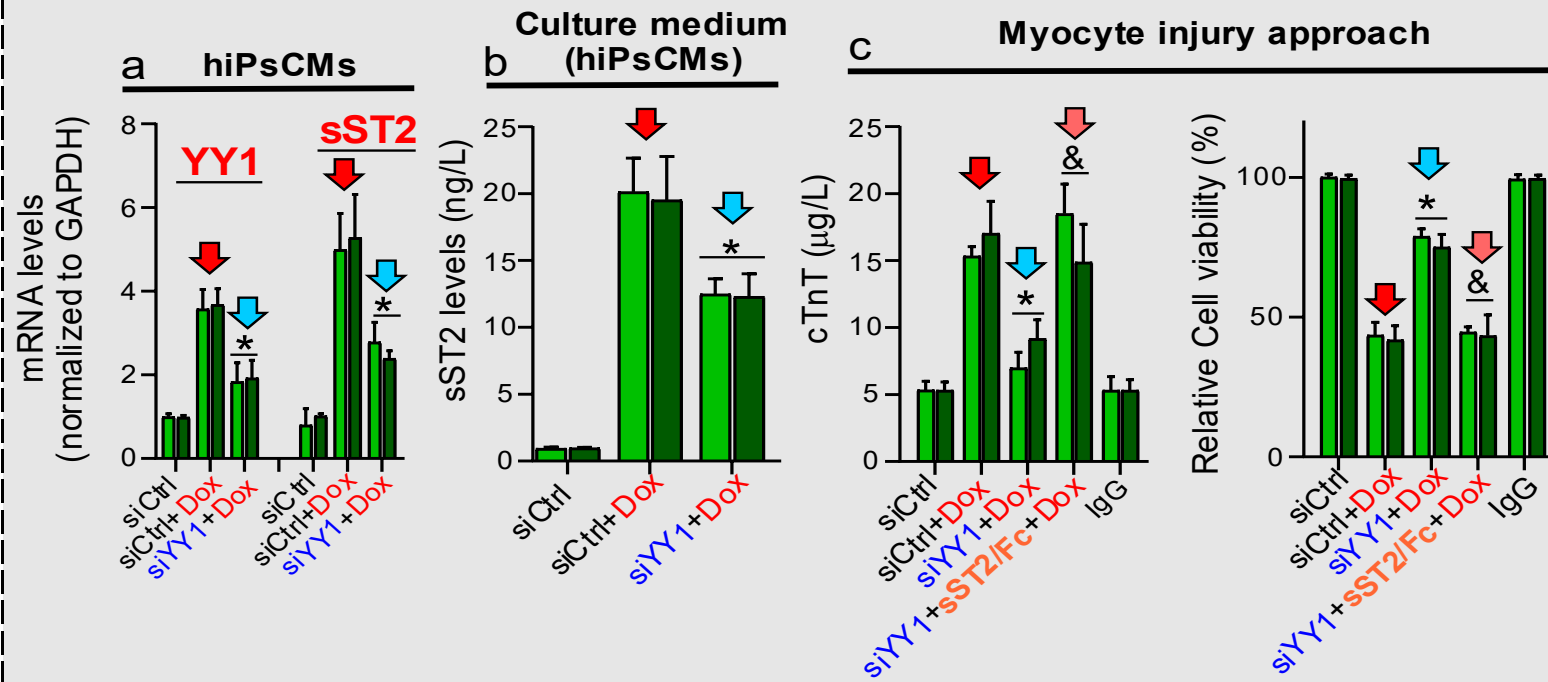
Panel c_Cell viability

Procedure	Male					Female				
siCtrl	99	101	98,96	101,32	100	100	100	99	98	101
siCtrl+DOX	44	47,32	35,63	45,25	45,32	44,12	43,32	44,15	44,62	32,65
siYY1+Dox	74,65	80,32	77,65	81,32	80,32	74,52	80,32	78,96	70,62	70,35
sST2-Fc+siYY1	41,32	45,62	45,62	45,25	45,32	33,62	54,32	45,32	41,62	41,65
IgG	101	98	98	99	101	100	100	98	99	101



Human iP-deri-ved Cardiomyocytes (hiPsCMs)

■ Male ■ Female



Panel d_YY1

Procedure	Male					Female				
siCtrl	0,78	0,98	1,02	0,98	0,89	0,95	1,01	1,01	1	0,98
siYY1	0,85	0,84	0,85	0,78	0,65	0,85	0,99	0,78	0,85	0,61

Panel d_sST2

Procedure	Male					Female				
siCtrl	0,99	1	1,01	0,98	0,89	1,1	1,02	0,96	1,01	0,98
siYY1	1,01	1	0,96	0,87	0,99	0,95	0,98	1,01	0,97	0,98

Panel d_YY1_BC tissue

Procedure	Male					Female				
siCtrl	5,52	5,32	6,32	5,54	5,22	4,65	5,52	6,32	4,23	3,65
siYY1	2,25	3,32	2,51	3,32	2,56	2,63	3,62	3,22	3,32	2,25

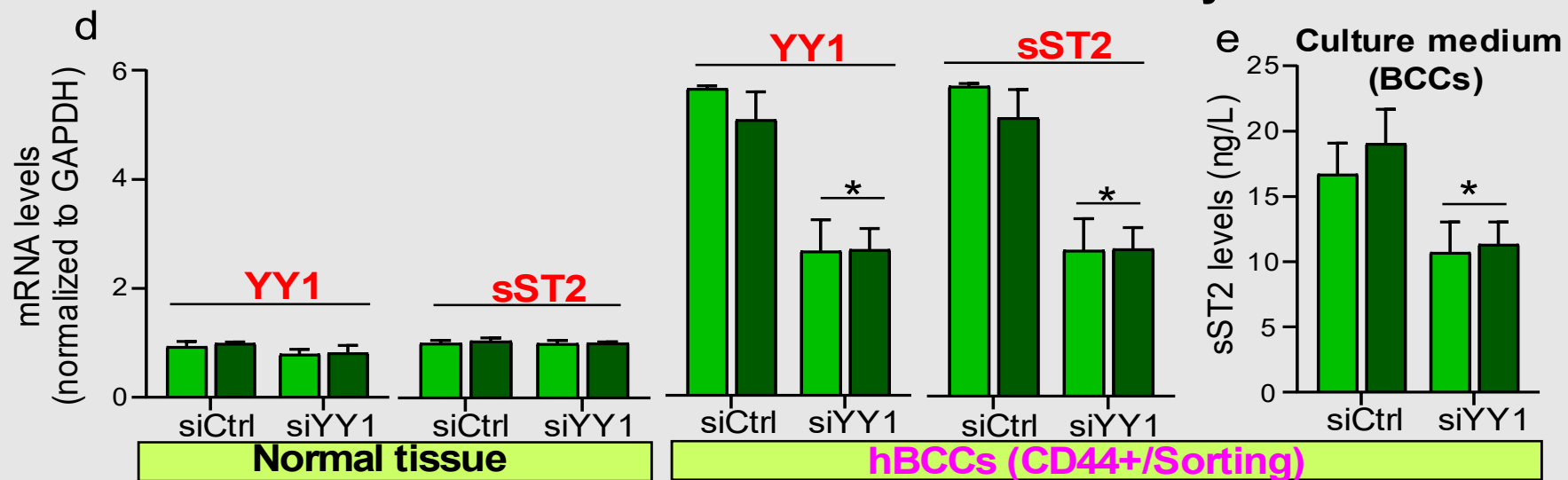
Panel d_sST2_tissue

Procedure	Male					Female				
siCtrl	6,32	5,62	6,24	6,32	5,92	6,5	5,32	4,56	6,5	5,25
siYY1	3,23	2,52	3,12	2,51	3,2	3,32	2,52	3,62	2,32	2,54

Panel e

Procedure	Male					Female				
siCtrl	20,22	15,63	17,985	15,41	14,32	20,32	21,32	18,63	20,32	14,65
siYY1	10,32	12,32	13,62	7,63	9,65	10,32	10,23	11,25	10,52	14,32

Human HER2+ breast cancer versus healthy donors



Panel f

Procedure	Male					Female				
siCtrl	8,36	7,62	8,36	8,41	8,63	7,25	8,36	6,35	6,85	
siYY1	15,32	16,52	14,63	13,62	13,25	14,52	16,32	11,25	12,32	11,25
sST2-Fc+siYY1	5,32	6,35	7,25	10,36	6,2	5,62	7,25	5,63	7,52	5,21
IgG	8,32	8,36	10,32	11,32	16,36	9,63	10,32	4,65	6,65	8,25

Panel g

Procedure	Male					Female				
siCtrl	15,36	15,32	15,62	15,63	20,32	25,36	30,62	20,25	21,32	19,63
siCtrl+DOX	5,63	6,32	5,62	5,24	6,36	3,62	5,52	5,62	5,54	5,25
siYY1+Dox	12,32	12,32	13,25	14,62	14,62	15,32	15,25	14,32	12,32	11,25
sST2-Fc+siYY1	5,32	3,62	3,25	2,32	6,2	5,32	5,14	4,32	3,32	5,21
IgG	20,32	20,32	21,32	21,32	25,32	30,25	25,63	24,62	22,52	23,33

